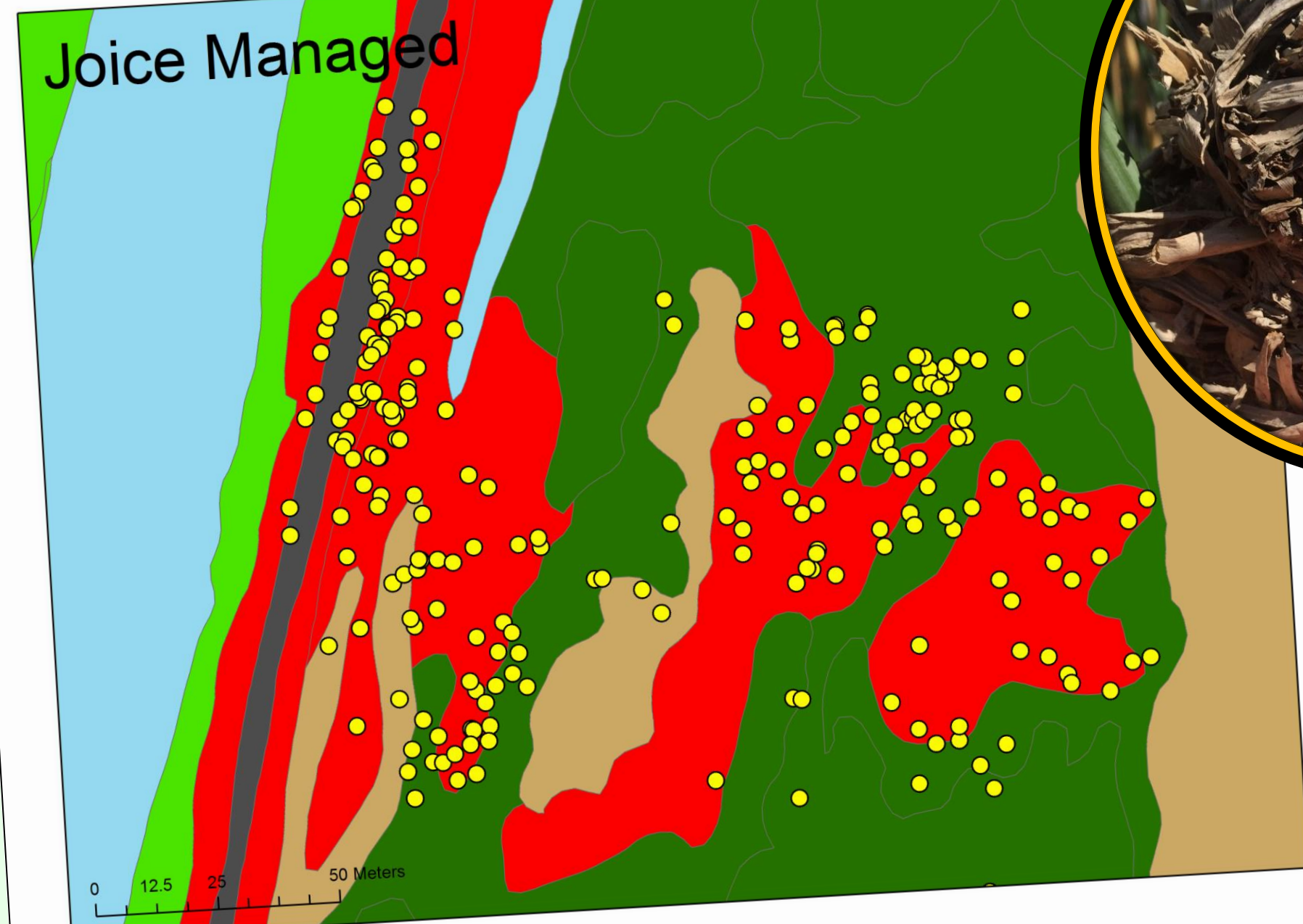
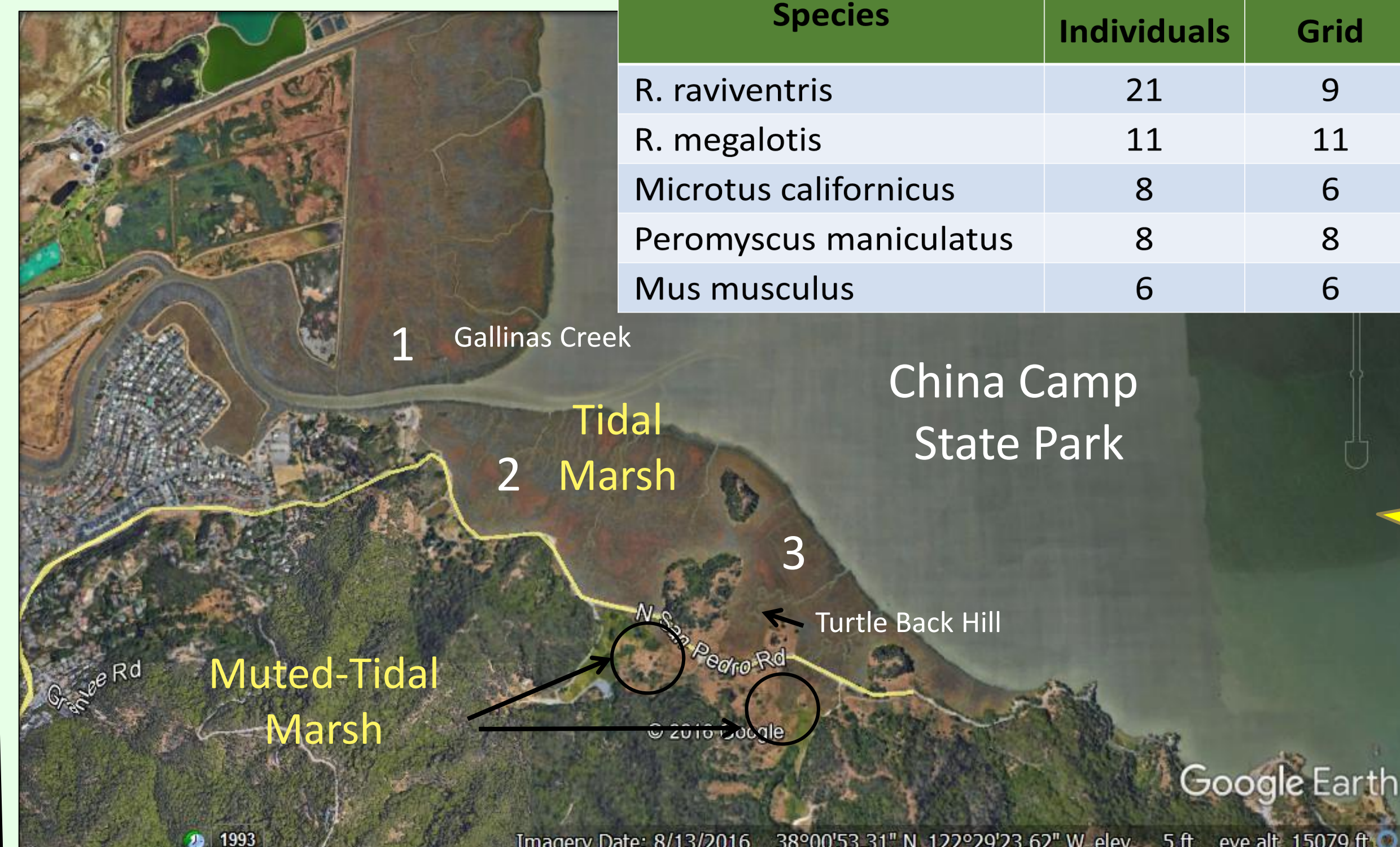


# Flexible Habitat Use!



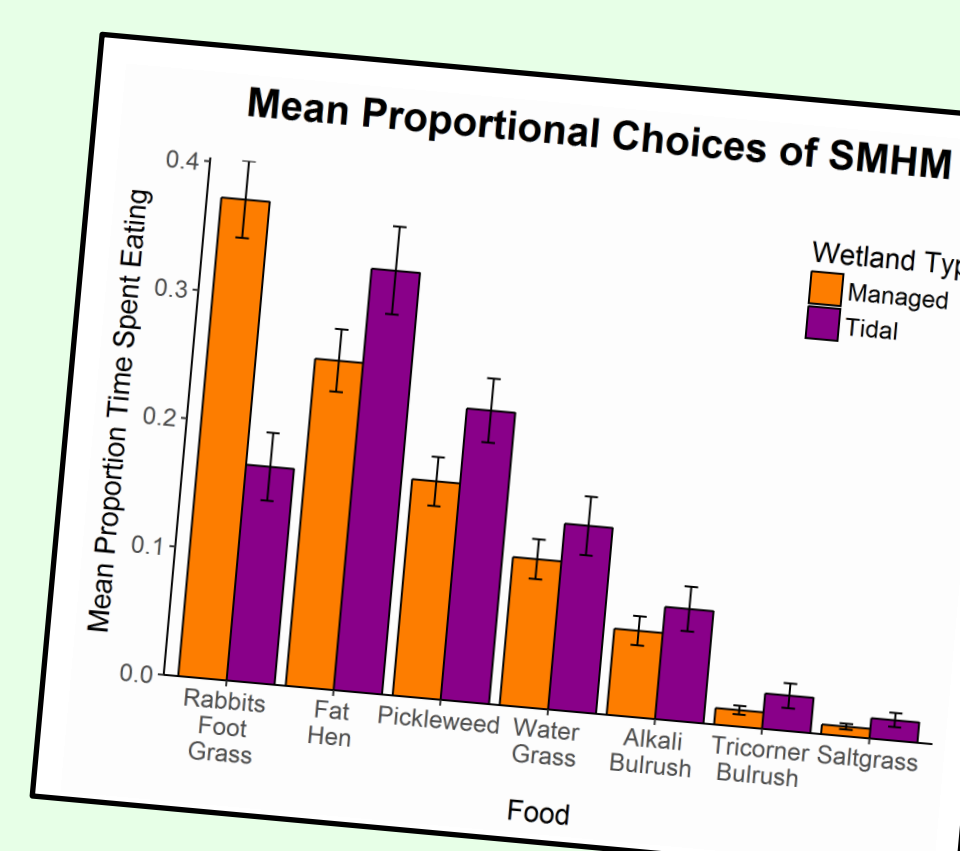
Radiotelemetry has revealed that SMHM utilize **VIRTUALLY ALL** microhabitats in tidal and managed wetlands, and use a wide variety of nests and refuges!

Trapping efforts expanded into new microhabitat types within previously surveyed areas have revealed SMHM populations in areas where they weren't previously thought to exist!  
**CAN YOU BELIEVE IT?**

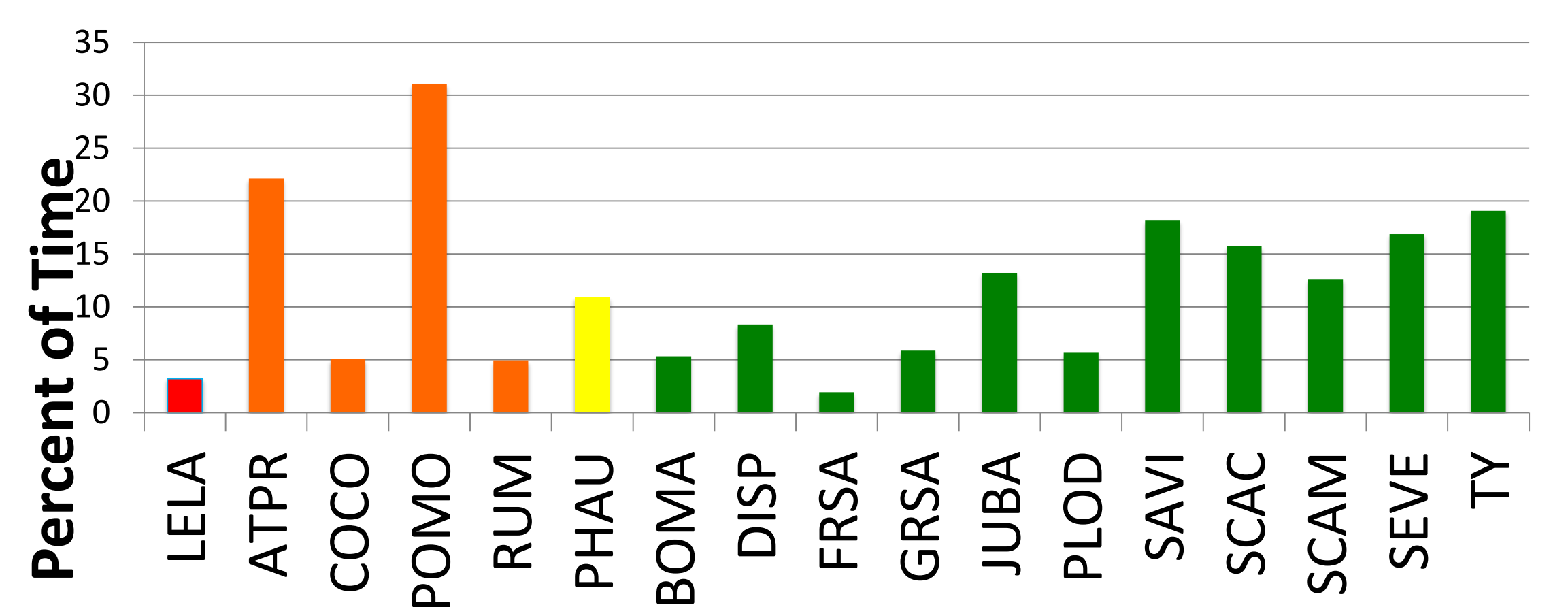


Species	# of Individuals	West Grid	East Grid
R. raviventris	21	9	12
R. megalotis	11	11	0
Microtus californicus	8	6	2
Peromyscus maniculatus	8	8	0
Mus musculus	6	6	0

New research has shown that pickleweed may not be the most preferred food type of SMHM. **WHOA!**  
*But wait, there's more!*  
SMHM **LOVE** foods grown in managed wetlands for waterfowl, and will eat a wide variety of foods, including invasive and non-native plants, and even invertebrates!  
**That's AMAZING!!**



SMHM Food Choices for Non-Native and Native Foods



# SALT MARSH HARVEST MOUSE!

©Katie Smith, UC Davis, Department of Wildlife, Fish and Conservation Biology, CA Department of Fish and Wildlife, Region 3, Suisun Marsh Group.

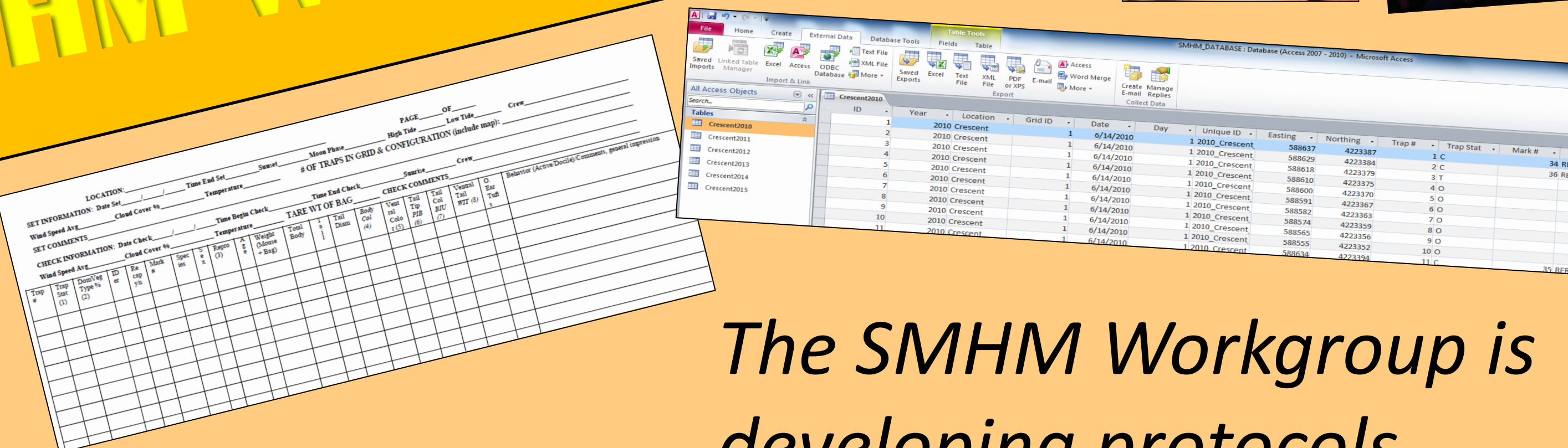
Now With Exciting **NEW** Features Like...

\*Reithrodontomys raviventris

## SMHM Workgroup!



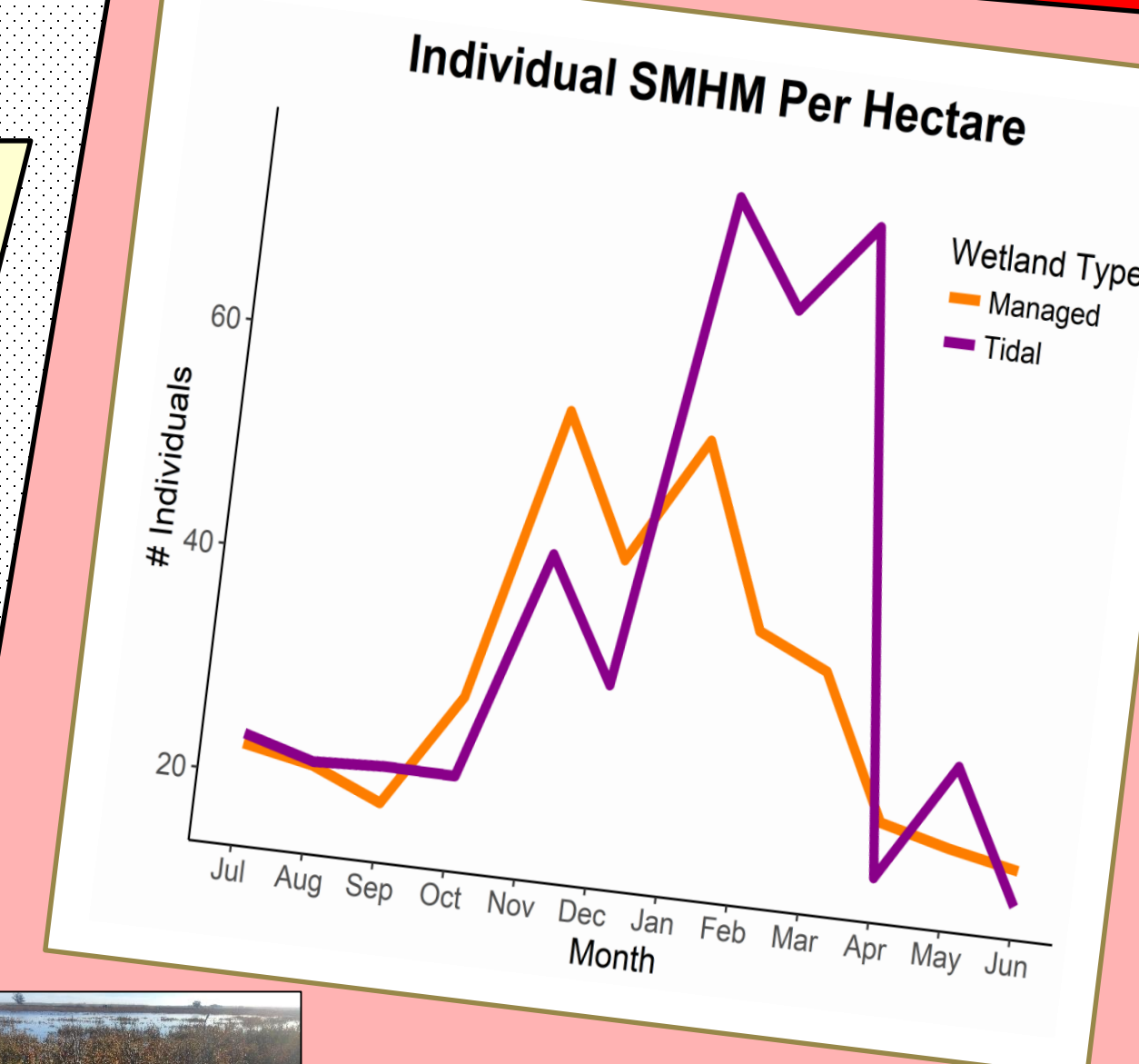
The SMHM Workgroup is developing protocols, priorities, and a data repository for **IMPROVED RECOVERY EFFORTS!**



**NEW & Improved**

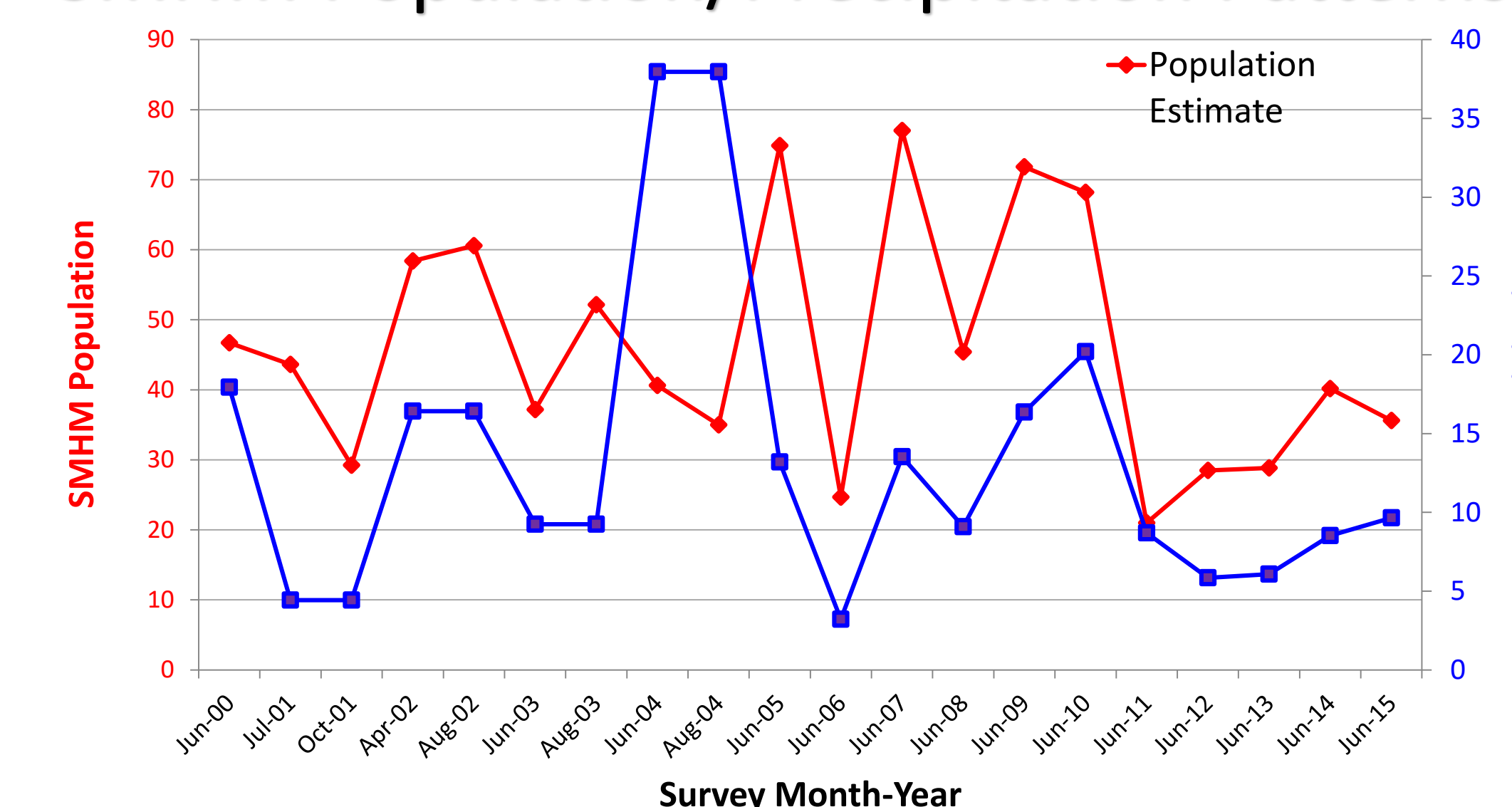
Learn More **TODAY**

## Predictable Population Trends!



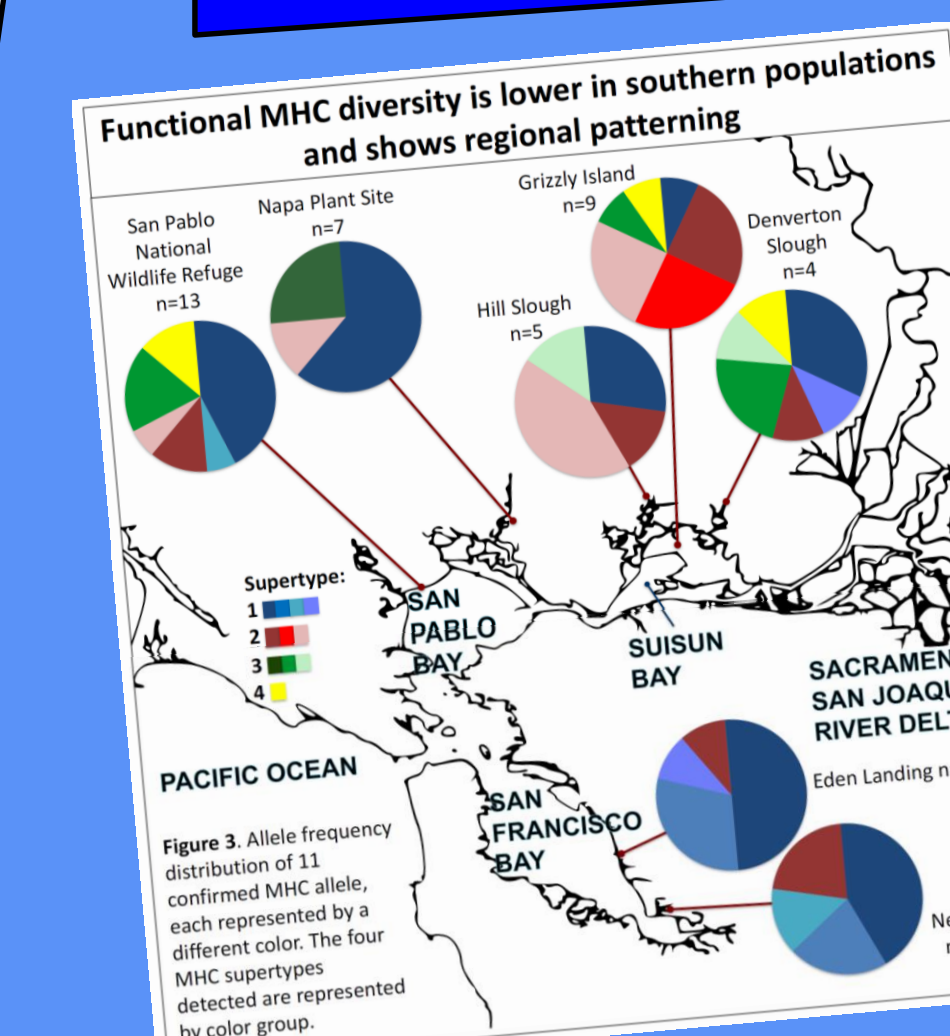
The **LARGEST EVER** mark-recapture study on SMHM revealed that populations in tidal and managed wetlands are not significantly different! And, populations are largest in the late fall and winter!

SMHM Population/Precipitation Patterns



**But wait, there's more!** Analysis of this and other long term data sets has provided evidence that SMHM populations spike during dry periods, and crash after very wet periods! **WOW!**

## Compelling Genetic Variation!



Emerging data from **CUTTING EDGE GENETICS TECHNIQUES** are revealing that SMHM and western harvest mice don't hybridize, northern and southern SMHM are quite diverged, and that southern SMHM have **much lower** genetic diversity!

