



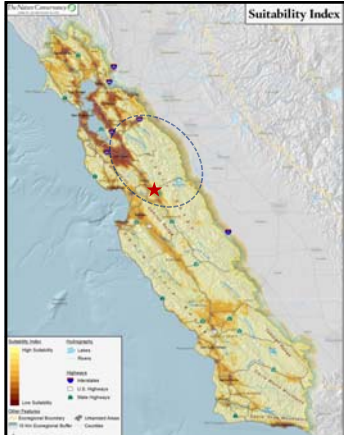
**The Nature Conservancy**  
Protecting nature. Preserving life.

*The mission of The Nature Conservancy is to conserve the lands and waters on which all life depends.*




**TNC Ecoregional Conservation Areas**

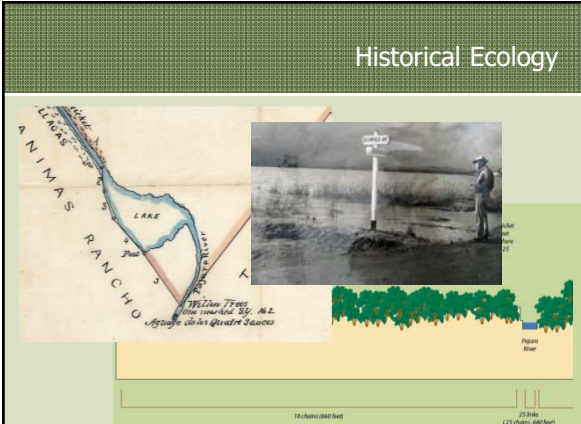
- Lands and waters needed to sustain the biodiversity
- Full array of:
  - native species,
  - communities,
  - ecological systems



**Suitability Index**

**Habitat Permeability**

- Suitability Index
  - Road density
  - Developed land cover
  - Row crop (ag) land cover
  - Non-natural edge
- Southern Bay Area
  - Relatively low permeability
  - Critical for connectivity



**Historical Ecology**


ANIMAS RANCHO

WILSON TRACT

THE COURTESY OF M.L. AGUIRRE


PIEDRA BLANCA

**Wildlife cameras**



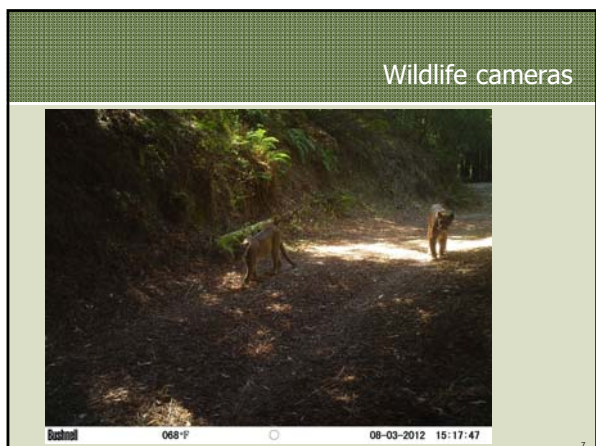
Wildlands1 50°F 10°C 08-07-2012 07:00:40

**Wildlife cameras**



Wildlands2 50°F 10°C 08-28-2012 05:32:01

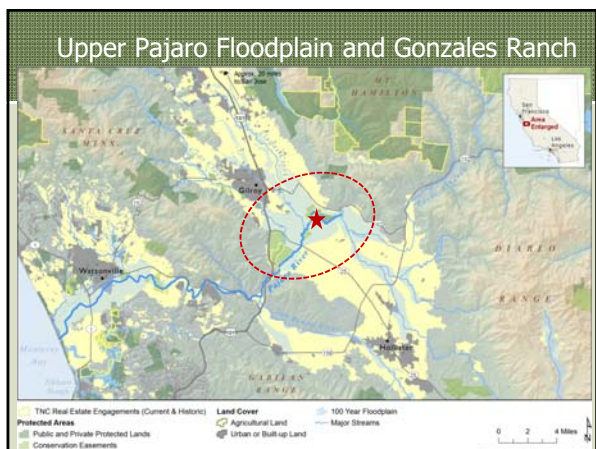
Wildlife cameras



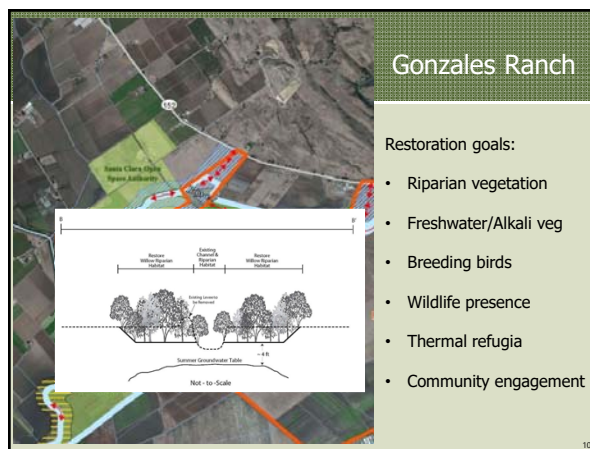
Wildlife cameras



Upper Pajaro Floodplain and Gonzales Ranch



Gonzales Ranch



Riparian Corridor



Thank you...Questions?



Sasha Gennet  
[sgennet@tnc.org](mailto:sgennet@tnc.org)  
(415) 385-7028