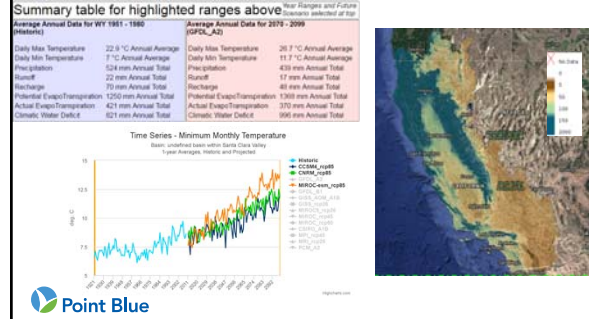


Incorporating climate projections to guide climate smart restoration

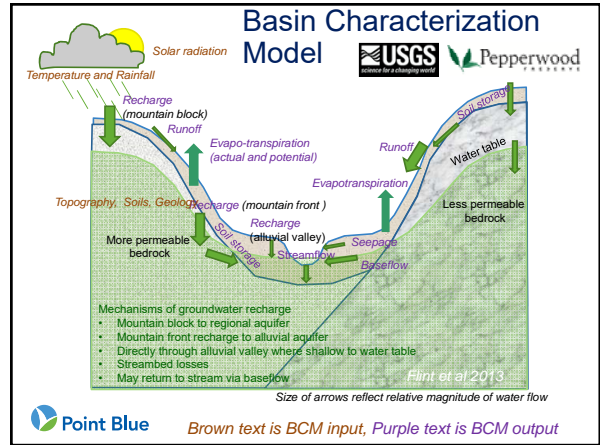
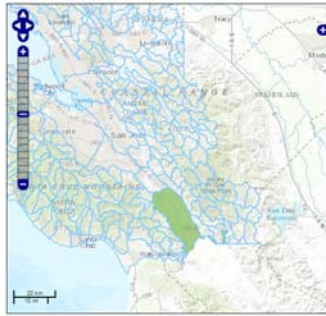
Sam Veloz, Point Blue Conservation Science
9/21/16



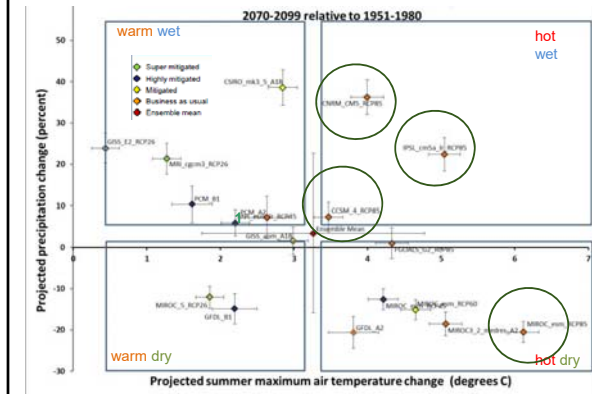
Climate Smart Restoration: How do I synthesize climate projections?



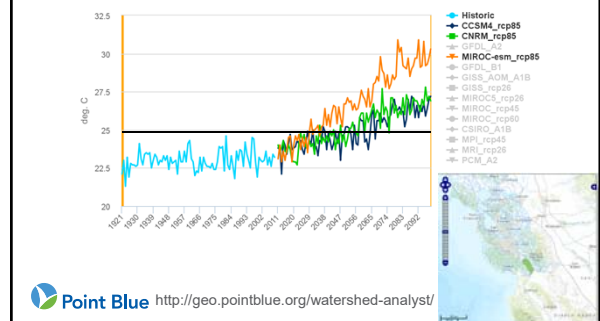
Example from the Pajaro River



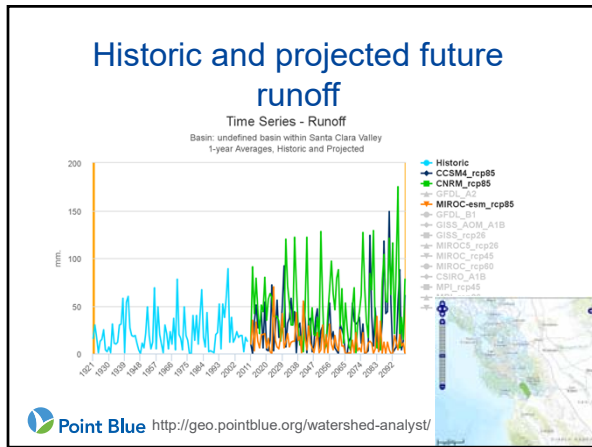
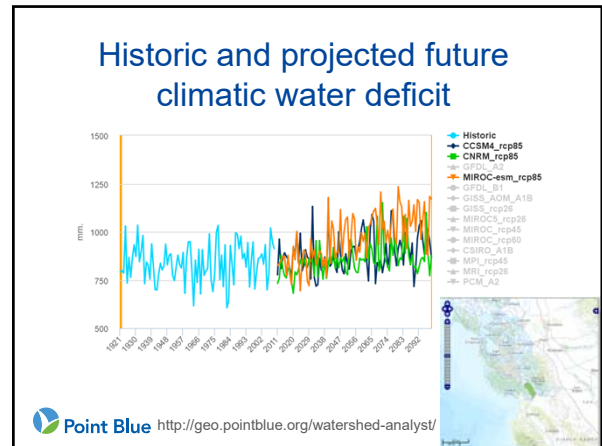
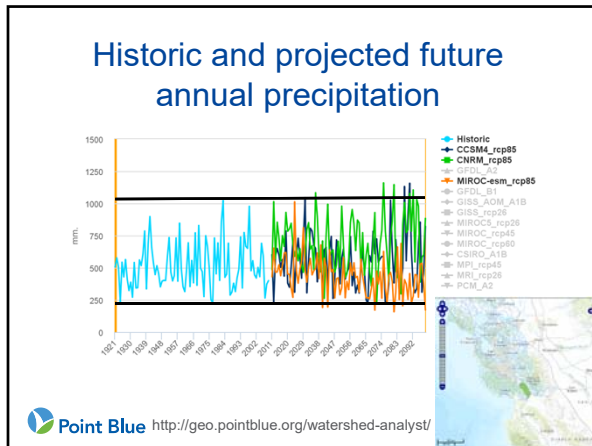
Climate model selection



Historic and projected future maximum monthly temperature



Point Blue <http://geo.pointblue.org/watershed-analyst/>



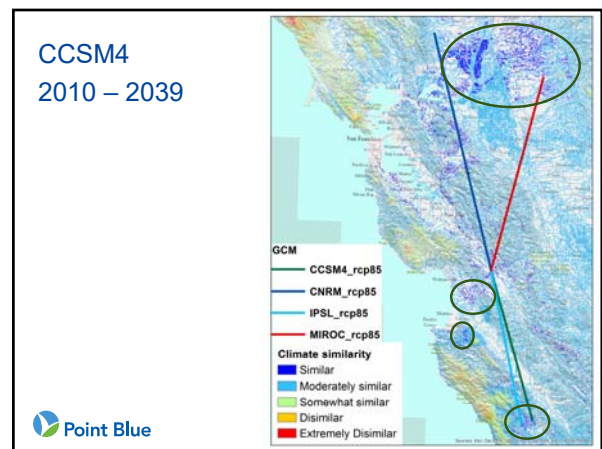
Is there anywhere in CA today that has a similar climate to the Pajaro river's future climate?

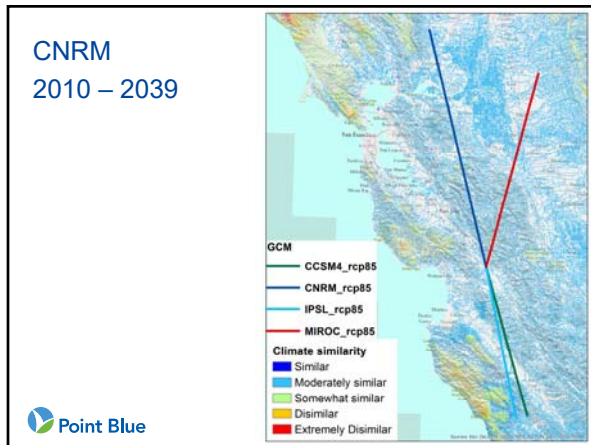
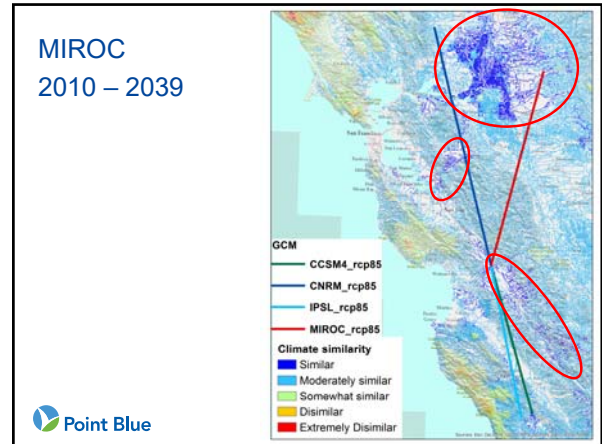
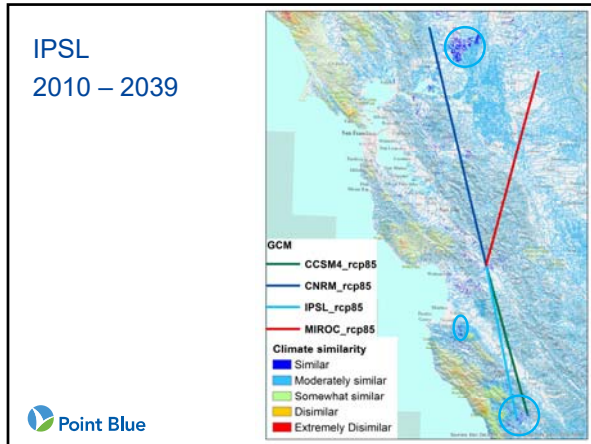
Point Blue

Climate Analogs

- Find the closest climate match between two time periods.
- For projected future climate, what is the closest match from the 20th-century? Where is this match located.

Point Blue





Applications

- Selecting a planting pallet:
 - What grows in analog locations?
 - What are the traits of plants that grow there?
- Seed collection
- What wildlife occurs in analog locations at what time of year?

Point Blue

Any questions?

sveloz@pointblue.org

Point Blue