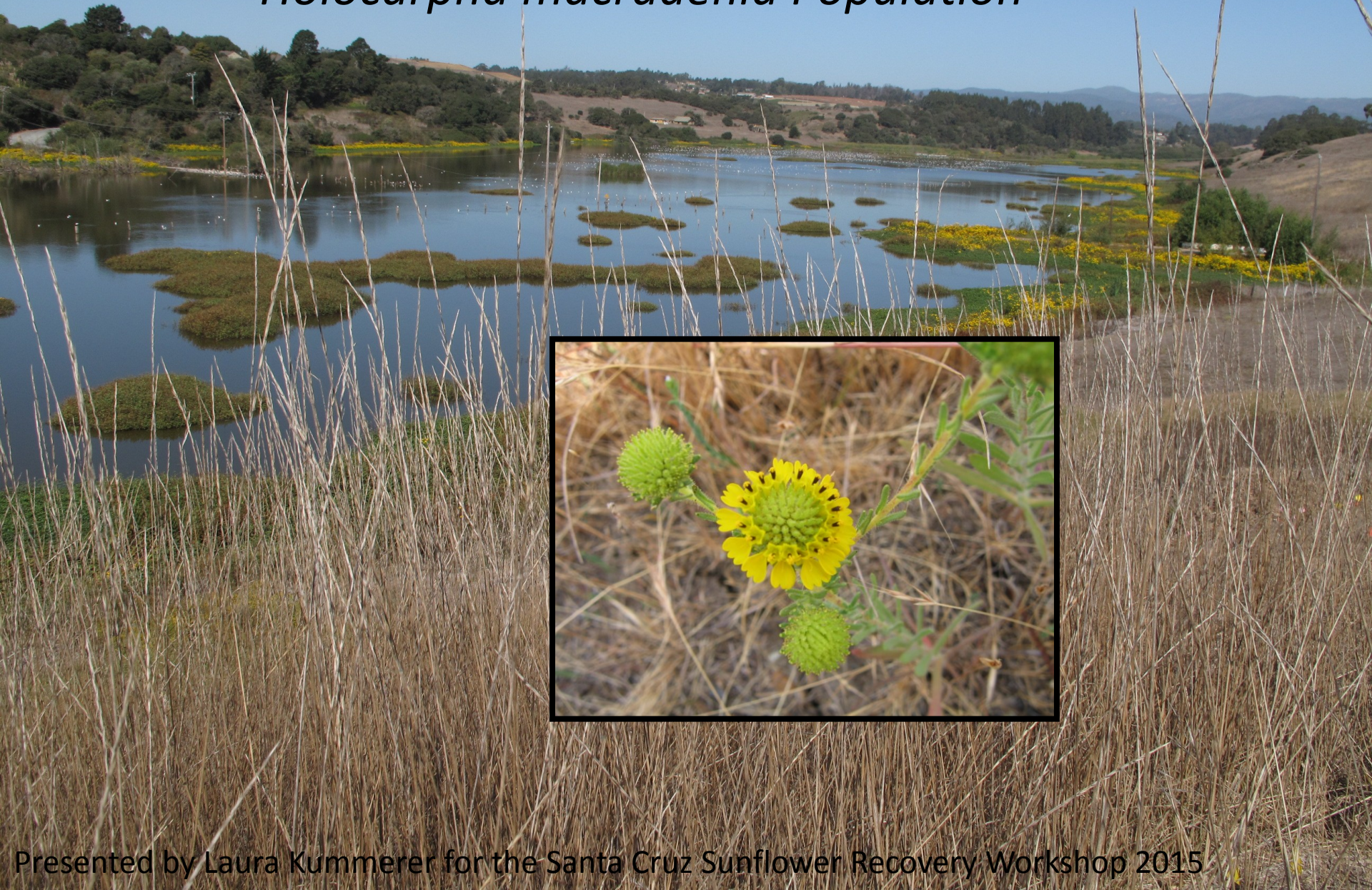


2015 Update on the Harkins Slough CNDDDB #40 *Holocarpha macradenia* Population



Historic and Present *Holocarpha macradenia* locations at Harkins Slough Grassland CNDDDB #40



2005-2015 POPULATION STATISTICS CORRELATED WITH MANAGEMENT FOR THE HARKINS SLOUGH CNDDDB #40 HOLOCARPHA MACRADENIA POPULATION

Year	Total Individuals	Total # Seed Receptacles	Average Plant Height in cm (ground to top of tallest seed receptacle)	# of Individuals in Historic Area	Management of Historic <i>H. macradenia</i> Area	Management of 130' sq. enclosure with above ground plants
2005	108	193	18.3 +/- 6.0	0	No management 9,000 lbs./acre RDM	No management
2006	15	67	15	0	Rotational grazing of 50 goats and 4 cows Jan-July. 1,000-2,000 lbs./acre RDM	Kept annual weeds hand clipped to 4" and removed all thatch. Hand weeded 5" radius around seedlings
2007	146	176	7.9	0	Rotational grazing of 20 goats and 4 cows Jan-July. 700-1,000 lbs./acre RDM	Kept annual weeds hand clipped to 2.5" and removed thatch. Hand watered plants monthly from May-July
2008	12	13	4.7	0	Rotational grazing of 15 goats and 3 horses Jan-July. 500-1,000 lbs/acre. RDM	Kept weeds hand clipped to 2.5" and removed thatch
2009	205	1082	13.4	1	Rotational grazing of 4 goats, 3 horses and 2 cows Jan-July. 500-1,000 lbs./acre RDM	Kept weeds hand clipped to 2.5" and removed thatch
2010	57	117	12.2	2	Rotational grazing of 4 goats and 5 cows Jan-July 4 100 meter square scrapes conducted in August. 500-1,000 lbs./acre RDM	4 cows spent 2 hours in the enclosure in November when the soil was saturated to create compaction
2011	10-20	No data	No data	None seen	Rotational grazing of 4 goats, 3 cows and intermittent horse grazing Jan-July. 500-1,000lbs/acre RDM	No management
2012	10-20	No data	No data	None seen	4 goats and 3 cows with 3 intermittent horses grazed year round without paddock rotation 500-700 lbs./acre RDM	No management
2013	15	39	7.5	0	9 goats and 3 cows with 3 intermittent horses grazed year round without paddock rotation. 300-500 lbs./acre RDM	No management
2014	7	No data	No data	None seen	9 goats and 3 cows with 3 intermittent horses grazed year round without paddock rotation. 300-500 lbs./acre RDM	Goats broke through enclosure and denuded site of all vegetation
2015	131	386	10.3	0	9 goats, 3 cows and 3 intermittent horses grazed year round without rotation. 300-500 lbs./acre RDM	Exclosure repaired and animals kept out

?

?

?

Population Statistics for Harkins Slough *H. macradenia* Population from 2005-2015

*2011, 2012 and 2014 were not formally monitored. These are estimated numbers from a visual walk on the property.

