

Coastal Recovery Efforts

2014 Amphibian Summit

Kelli Camara, RCD
Chris Caris, USFWS
Terris Kasteen, CDFW



Illustrations by
Isabelle Lasher

Presentation Topics

- Projects on Ellicott Slough National Wildlife Refuge
- Projects on CDFW Ecological Reserves
- Planning Efforts



Planning Efforts

- Integrated Watershed Restoration Program (IWRP)
- Salamander Recovery Team
- Identification of Projects



9/2

Ellicott Slough National Wildlife Refuge



U.S. Fish & Wildlife Service

Ellicott Slough National Wildlife Refuge

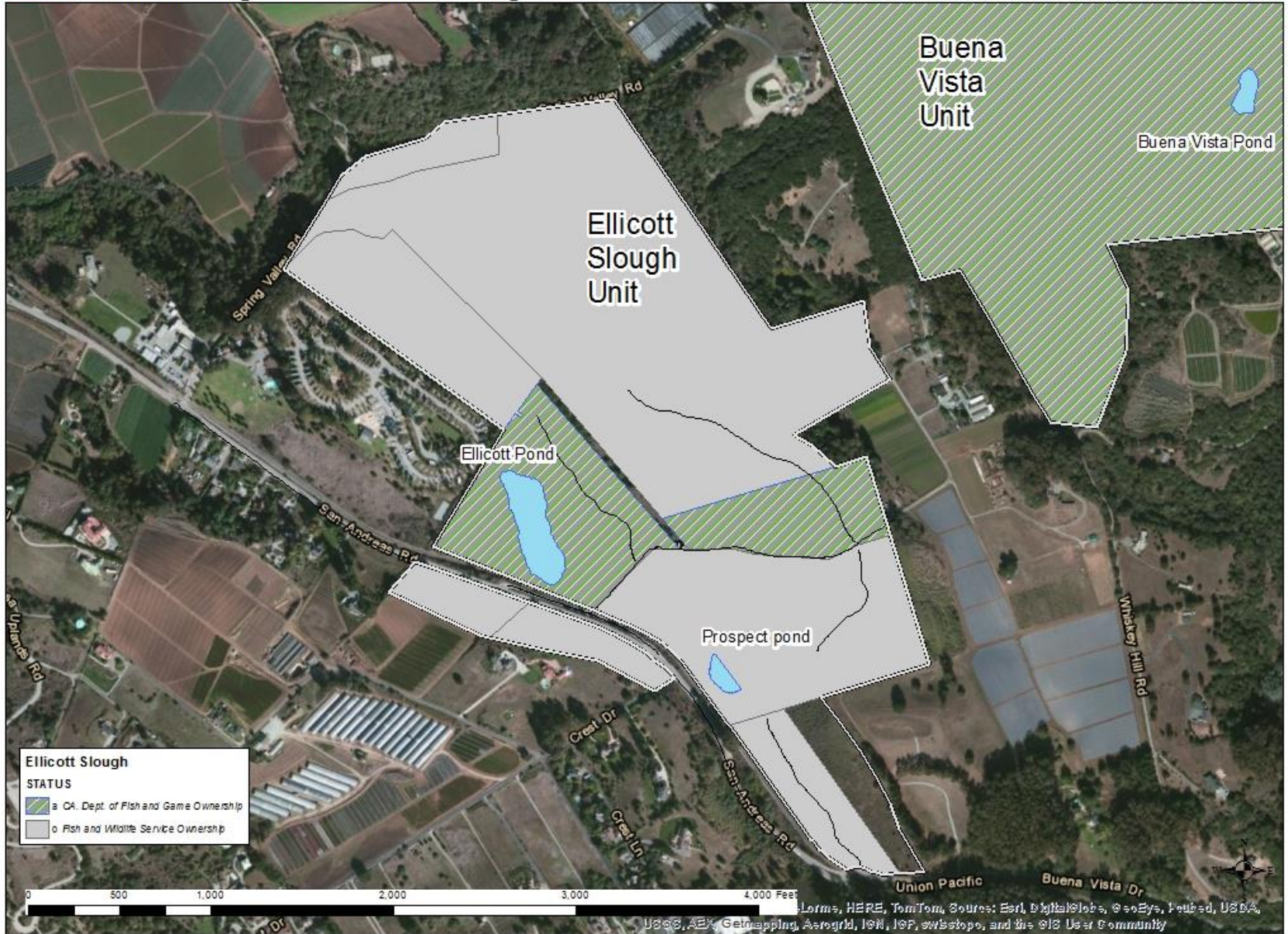


Ellicott Slough National Wildlife Refuge



U.S. Fish & Wildlife Service

Ellicott Slough National Wildlife Refuge



Map data sources: Esri, DigitalGlobe, GeoEye, USDA, USGS, AER, GeoMapping, AeroGRID, IGN, IGP, swisstopo, and the GIS User Community

Projects on the Ellicott Slough National Wildlife Refuge Prospect Pond



Prospect Pond



Prospect Pond



February 2013



Prospect Pond



Aquatic Sampling March 2013



Handwritten signature or initials.

Prospect Pond



Aquatic Sampling July 2013



Jul 16, 2013 11:44 AM prospect pond from photo point.

Handwritten initials or signature.

Prospect Pond



Handwritten initials or a signature in the bottom right corner.

Prospect Pond



Pond 2 ft deep, May 2014



Aquatic Sampling May 2014



Night Survey February 2014

Projects on the Ellicott Slough National Wildlife Refuge

Salamander Tunnels



Projects on the Ellicott Slough National Wildlife Refuge

Invasive Species Management

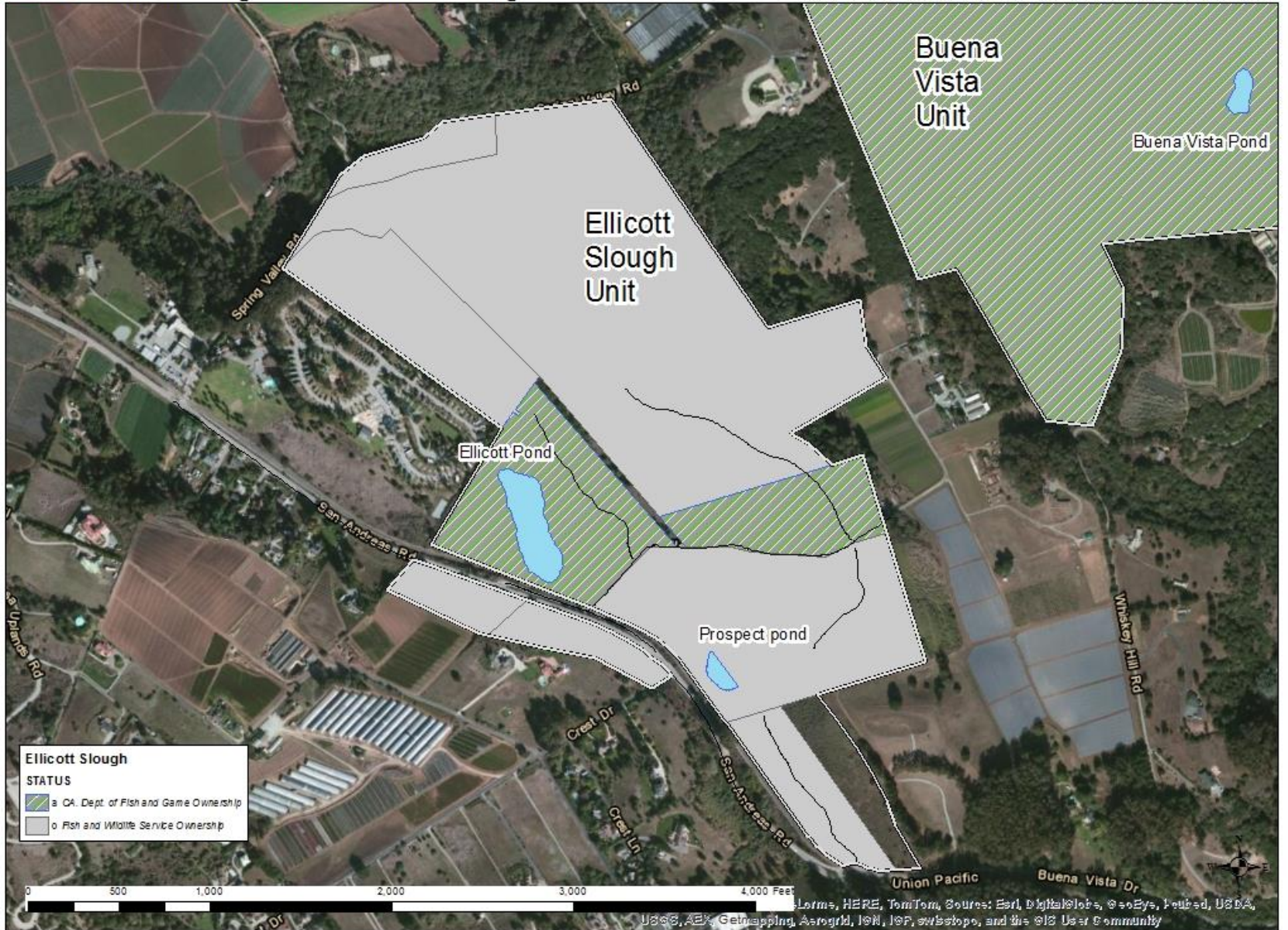


Projects on the Ellicott Slough National Wildlife Refuge



U.S. Fish & Wildlife Service

Ellicott Slough National Wildlife Refuge



Projects on the Ellicott Slough National Wildlife Refuge

Ellicott Pond



Buena Vista Pond



H

Ellicott Pond

BREEDING SEASON	SUCCESSFUL RECRUITMENT	
Oct-July		
1991-1992	SCLTS	
1992-1993	SCLTS	CTS
1993-1994		CTS
1994-1995	SCLTS	CTS
1995-1996	SCLTS	CTS
1996-1997	SCLTS	
1997-1998	SCLTS	
1998-1999	SCLTS	
1999-2000	SCLTS	CTS
2000-2001	SCLTS	
2001-2002	SCLTS	CTS
2002-2003		CTS

BREEDING SEASON	SUCCESSFUL RECRUITMENT	
Oct-July		
2003-2004	SCLTS	CTS
2004-2005	SCLTS	CTS
2005-2006	SCLTS	CTS
2006-2007		
2007-2008		
2008-2009		
2009-2010	SCLTS	
2010-2011	SCLTS	CTS
2011-2012		
2012-2013		
2013-2014		

Buena Vista Pond



Handwritten initials or signature.

Buena Vista Pond

BREEDING SEASON	SUCCESSFUL RECRUITMENT
Oct-July	
2003-2004	
2004-2005	
2005-2006	
2006-2007	
2007-2008	
2008-2009	SCLTS
2009-2010	
2010-2011	SCLTS CTS
2011-2012	
2012-2013	
2013-2014	

Projects on the Ellicott Slough National Wildlife Refuge

Ellicott Pond



Projects on the Ellicott Slough National Wildlife Refuge

Buena Vista Pond



H

Projects on CDFW Ecological Reserves



Handwritten initials or signature.

Projects on CDFW Ecological Reserves

- Willow Canyon



Post Construction 2012

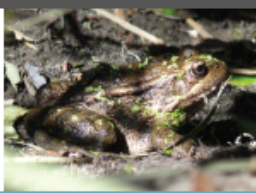
Willow Canyon



Post Construction 2013

A handwritten signature or initials in the bottom right corner of the page.

**WE NEED
YOUR HELP!**



Willow Canyon

This CA Department of Fish & Wildlife Ecological Reserve is home to native birds and amphibians. Efforts are underway, as part of an overall recovery plan, to improve habitat for our local wildlife.

**PLEASE HELP
PROTECT THIS
UNIQUE AREA**

If you would like more information about the recovery plan, please contact the Resource Conservation District at (831) 464-2950.

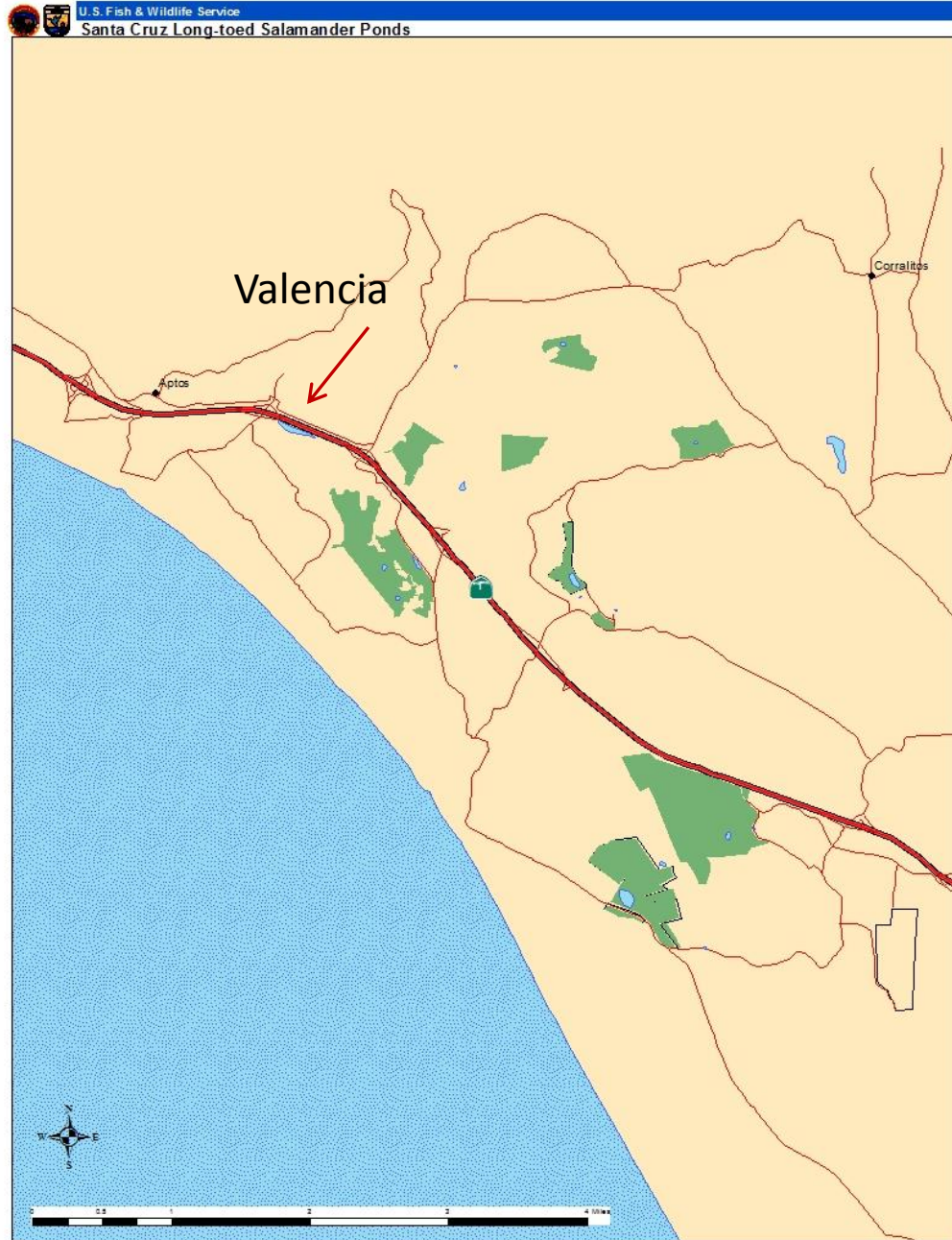


February 2014. Pre-Rain Event

Willow Canyon



Projects on CDFW Ecological Reserves



Handwritten initials or signature.

Projects on CDFW Ecological Preserves

- Valencia Lagoon

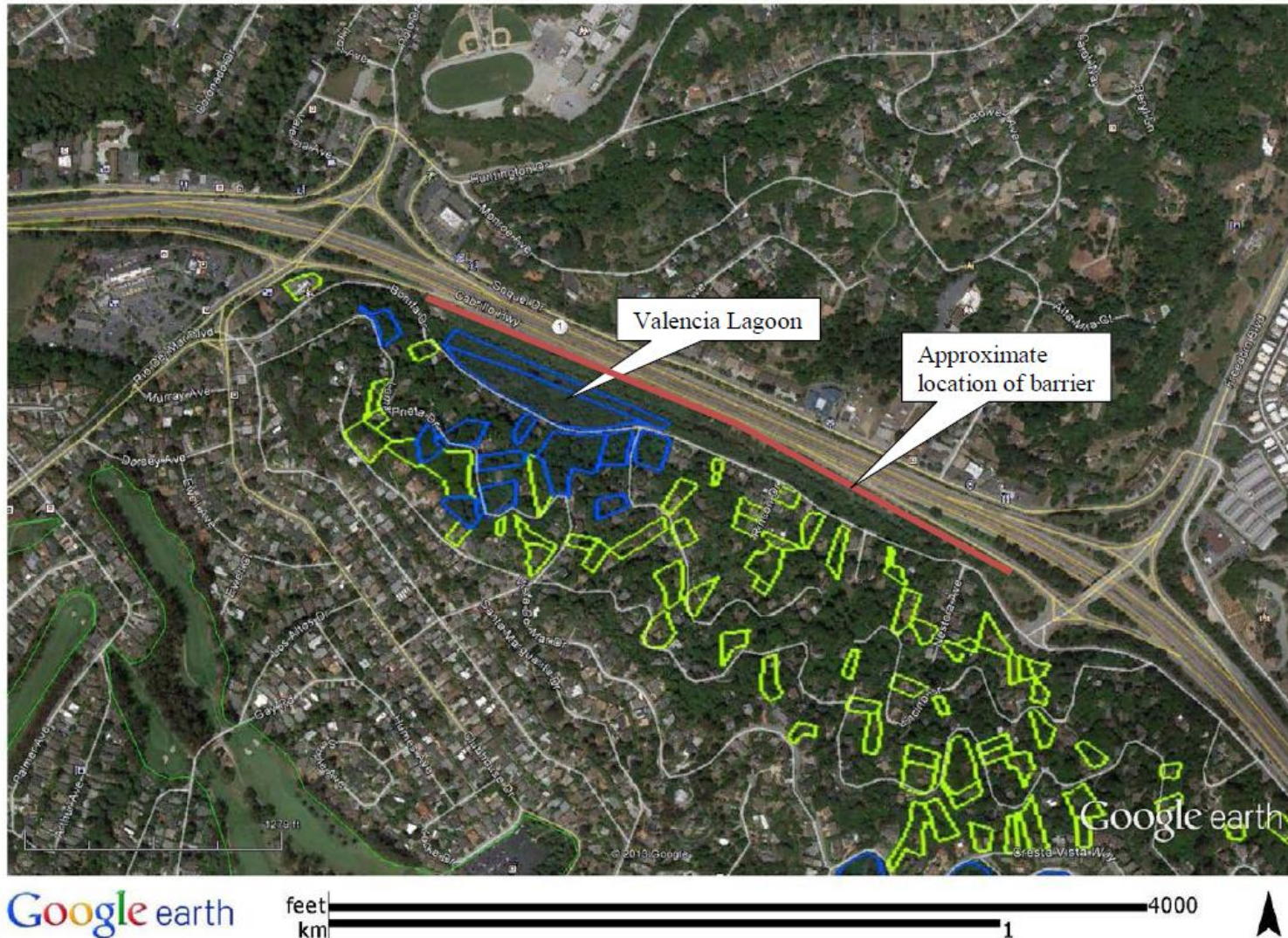


Figure 1. Map showing Valencia Lagoon Unit of the Santa Cruz Long-toed Salamander Ecological Reserve (blue polygons) and associated conservation easements (green polygons) in Aptos, California. Proposed barrier location shown in red.

Valencia Lagoon



H

Valencia Lagoon



Handwritten initials or signature.

Valencia Lagoon



Handwritten signature or initials.

Valencia Lagoon



H

Valencia Lagoon



Valencia Lagoon



Projects on CDFW Ecological Reserves



Handwritten initials or signature.

Milsap Property

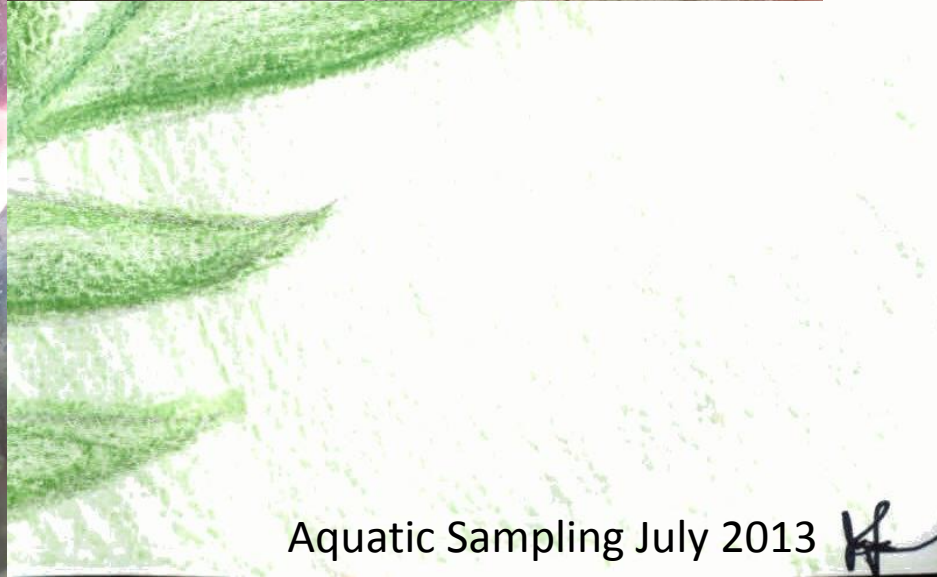


Milsap Property



Handwritten initials or signature.

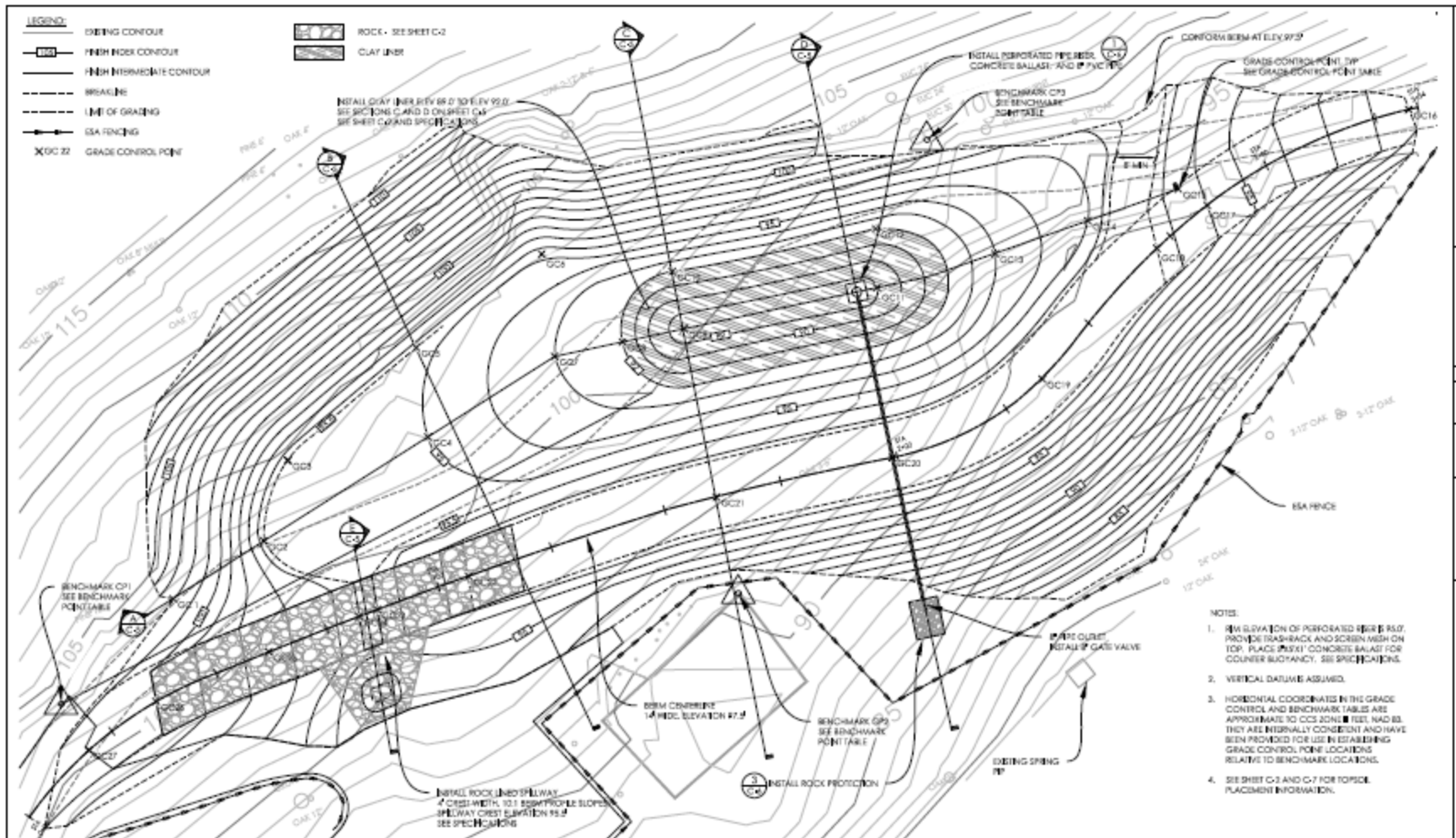
Milsap Property



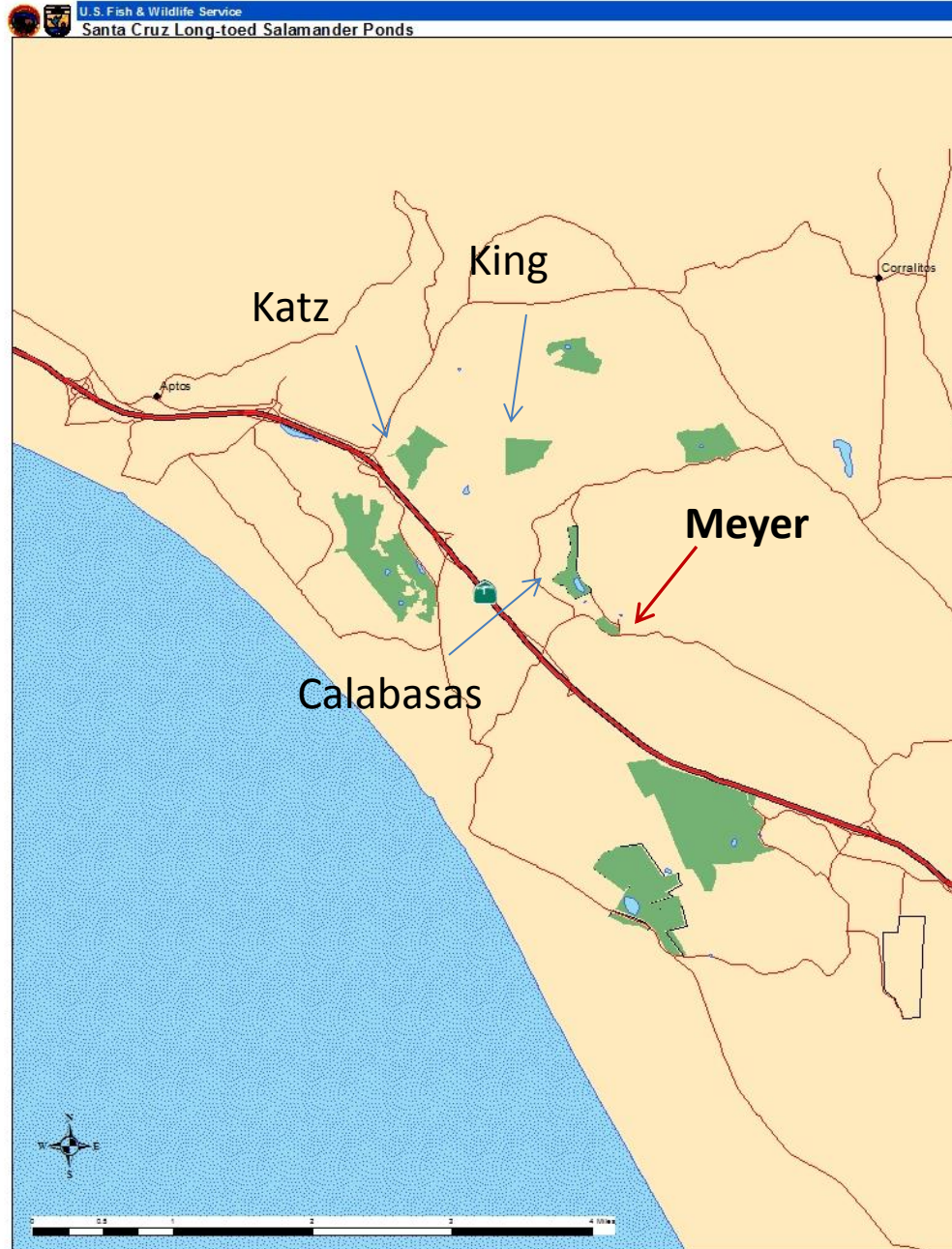
Aquatic Sampling July 2013

Handwritten signature or initials.

Milsap Property



Projects on CDFW Ecological Reserves



Handwritten initials or signature.

Projects on CDFW Ecological Preserves

- Meyer Property



H

Planning Efforts (cont.)

- Larkin Valley Recovery Plan



820 Bay Avenue, Suite 120
Capitola, California 95010
tel 831.464.2858 | fax 831.475.3215
www.rcdsantacruz.org

Strategic Plan for Recovery

*of the Santa Cruz long-toed salamander (*Ambystoma macrodactylum croceum*) and California red-legged frog (*Rana draytonii*) in the Larkin Valley area, Santa Cruz, California*

Prepared by
The Resource Conservation District of Santa Cruz County

for
The California Department of Fish and Wildlife

Project
Santa Cruz long-toed salamander Larkin Valley

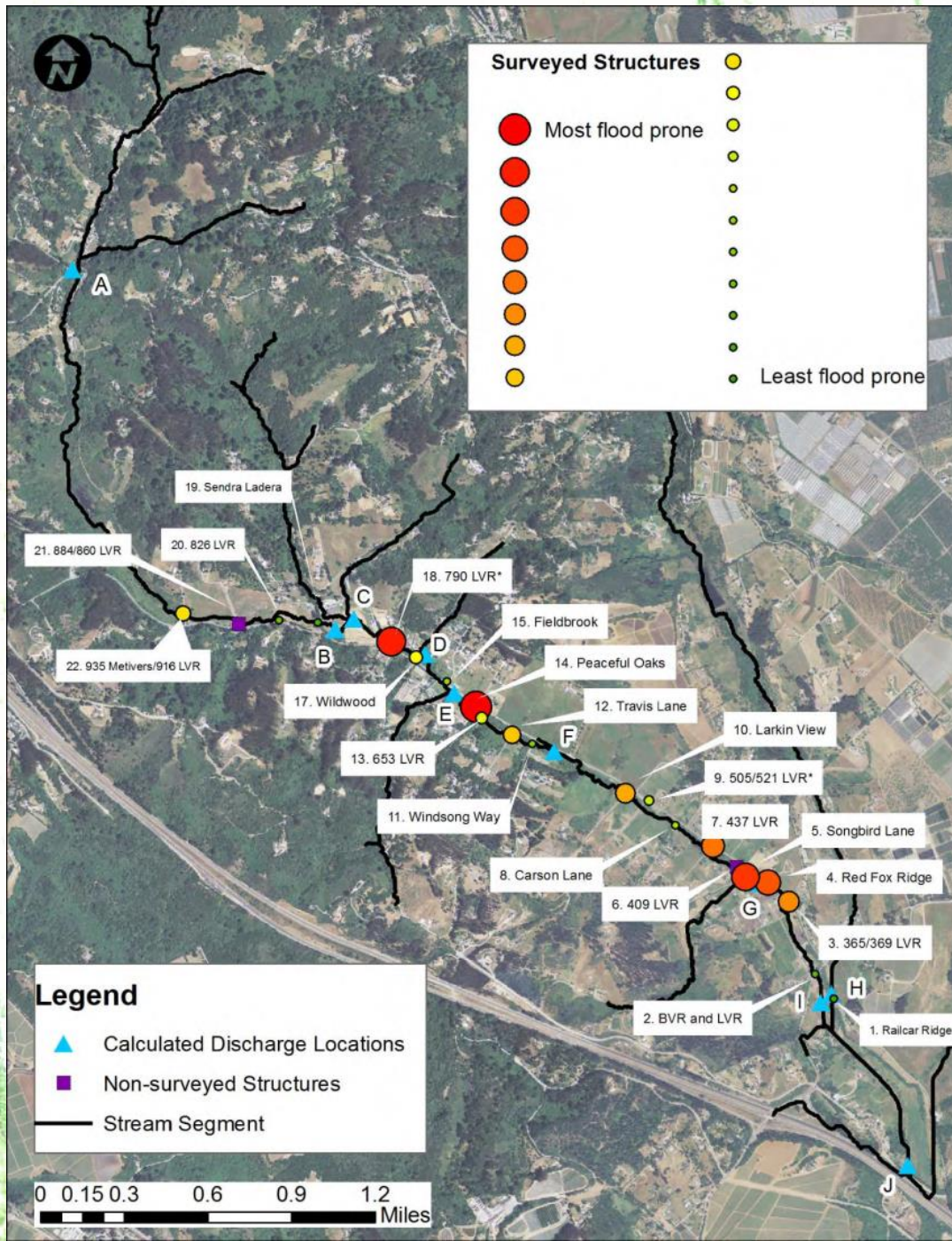
Grant Agreement Number
P1282027

December 31, 2013

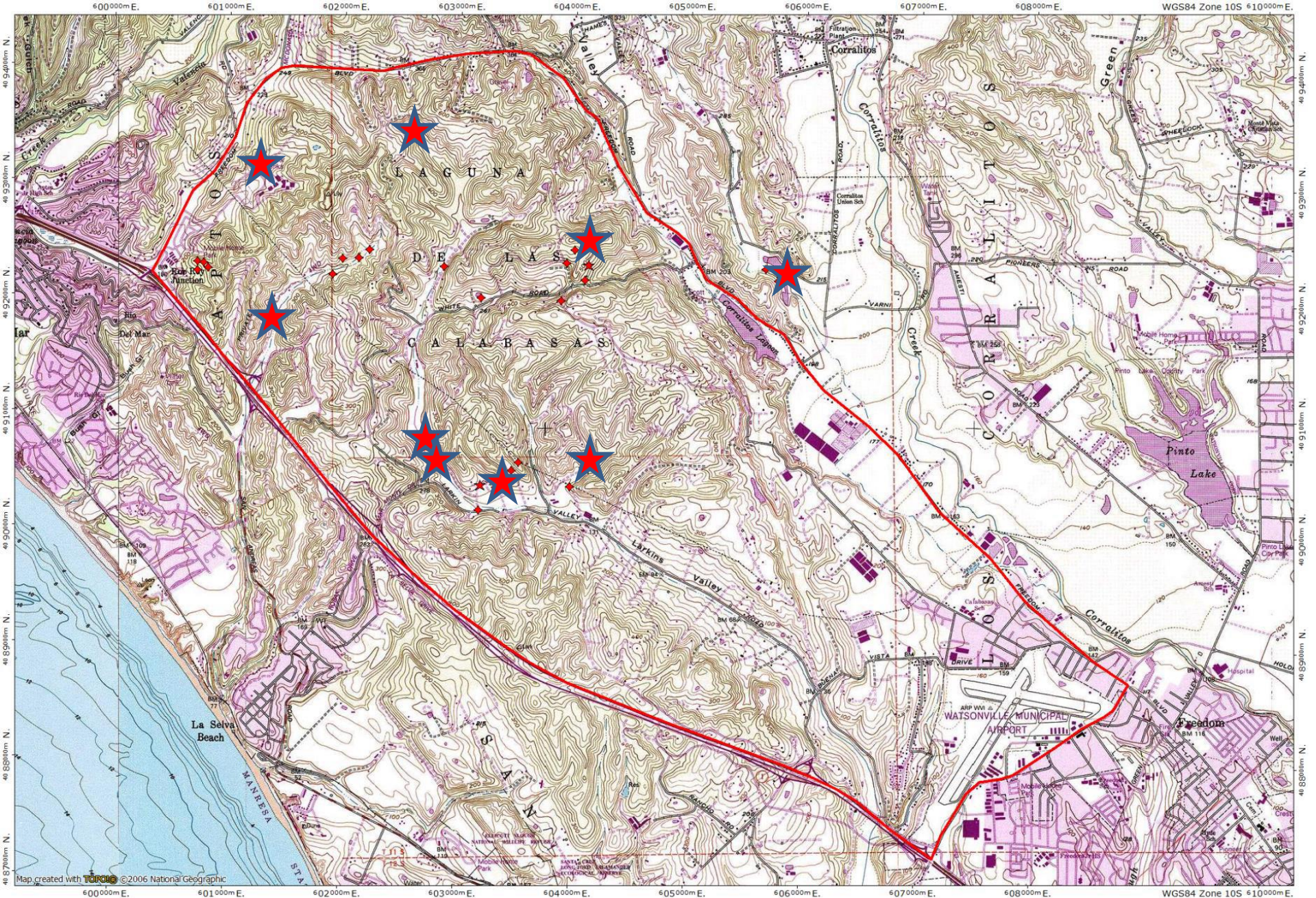
Helping people protect, conserve, and restore natural resources through
information, education, and technical assistance programs

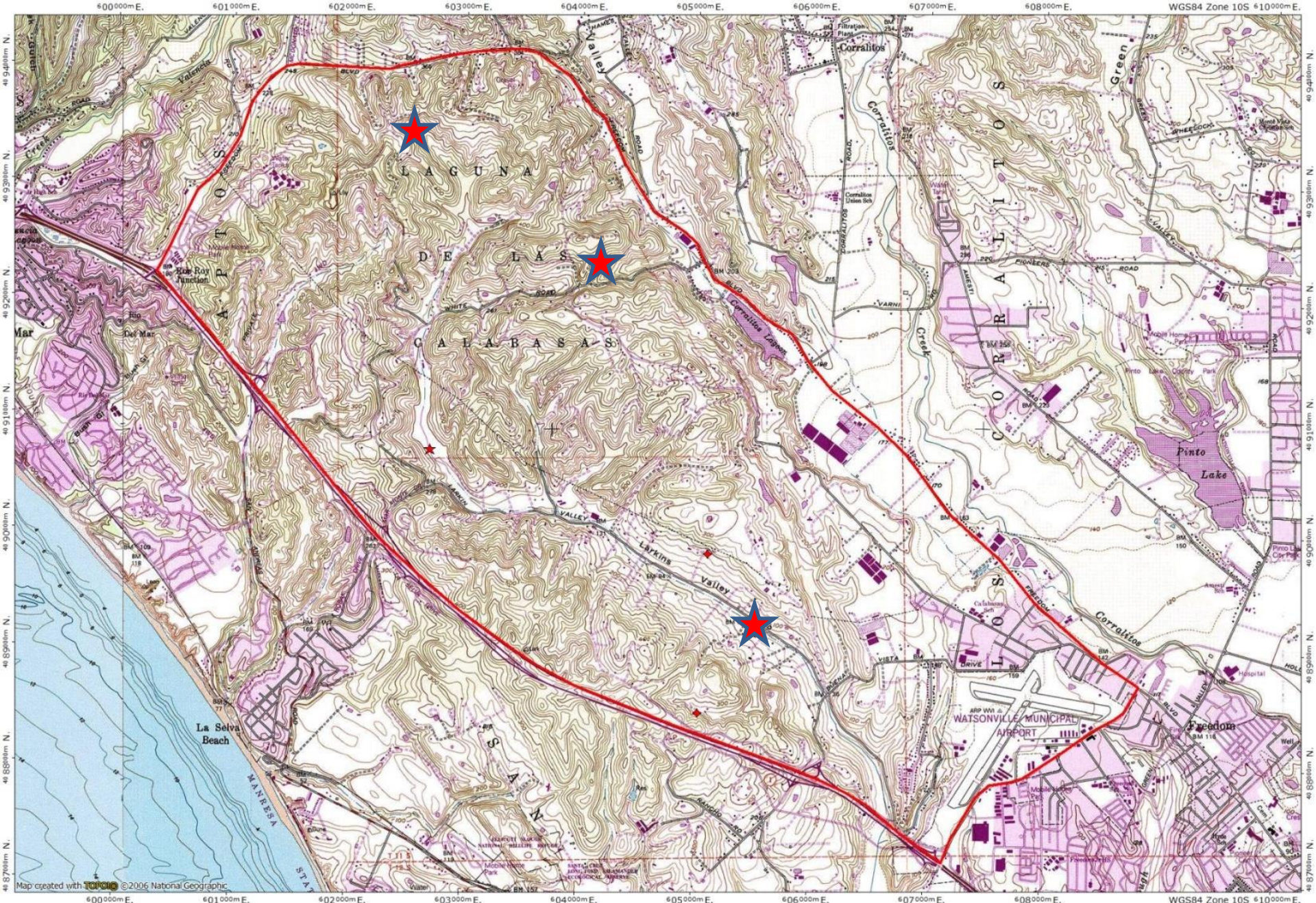
Recovery Plan Objectives

- Protect Larkin valley/Freedom population from extinction due to stochastic events
- Increase distribution of the species to reconnect with the populations west of Highway 1
- Initiate clear permitting procedures to address state designated fully protected status of SCLTS
- Engage private landowners

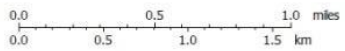


Handwritten initials or signature in the bottom right corner.

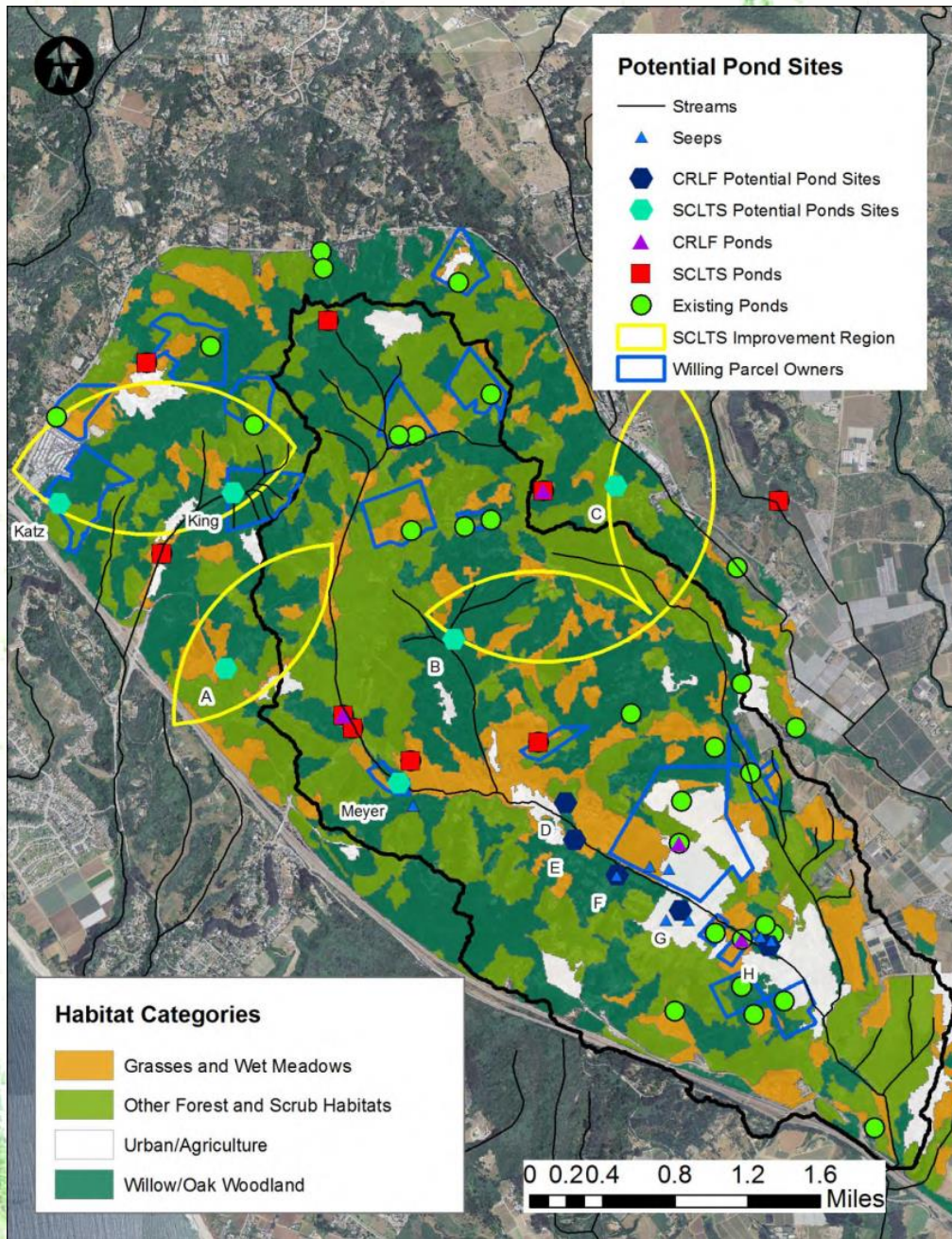




Map created with © 2006 National Geographic



WGS84 Zone 10S $\pm 10,000m E$
TN MN
13 1/2°
12/05/13



Handwritten signature or initials.

Questions?
Discussion!



H