



Low-Stress Livestock Handling

Roger Ingram
County Director and Farm Advisor
Placer & Nevada Counties

Attitude Adjustment

- **Old Attitude**

I'm going to MAKE that animal do what I want

- **New Attitude**

I'm going to LET that animal do what I want

Attitude Adjustment

- **Old Attitude**

That miserable cow broke back on me and went the wrong way

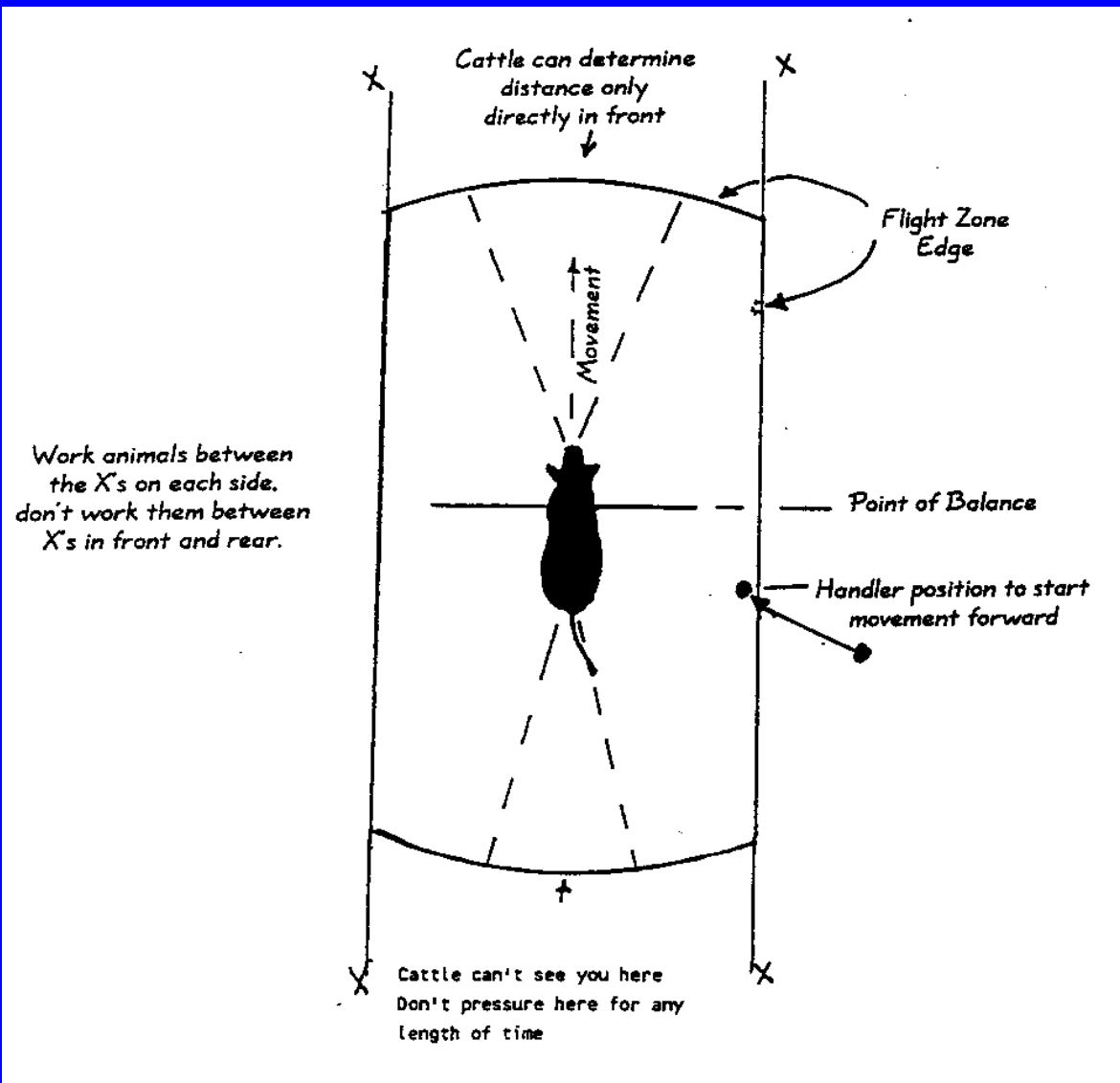
- **New Attitude**

What did I do to cause that cow to react that way

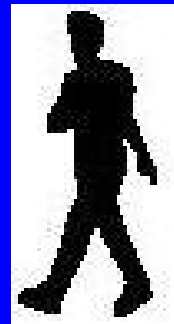
5 Main Points

- **Stop forcing stock**
- **Stop doing things that bother livestock**
- **Use handling techniques correctly**
- **It can take very little time to achieve a high level of control**
- **Low-stress livestock handling means that stock do not see us as predators**

Flight Zone



Pressure-Release





Pressure-Release

- **Livestock want to obtain relief from pressure first and foremost**
- **Applying and releasing pressure is how animals learn to become responsive and why they continue to respond well**
- **Pressure/release is how we keep them doing what we want for as long as we want**

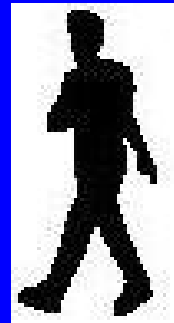
Pressure-Release

- **Important in getting stock to understand that we aren't aggressive and won't force them**
- **Before animals will respond calmly and responsively to pressure, they must learn that pressure has a readily available release**

3 Parts of an Animal

- **Emotional**
- **Mental**
- **Physical**

Pressure from the side



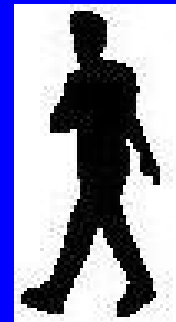
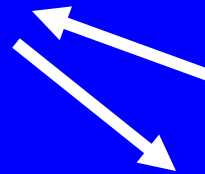
Sometime You Are Far Away



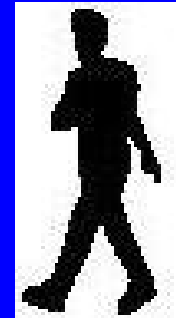
Sometimes You Are Close



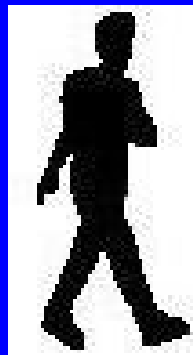
Pressure from a position toward the rear



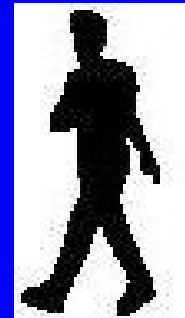
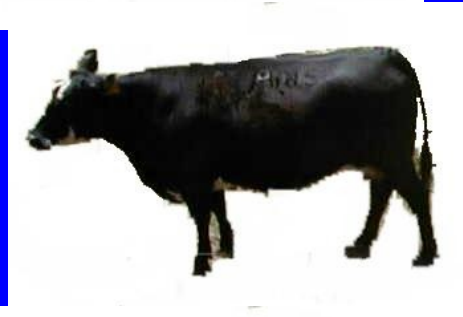
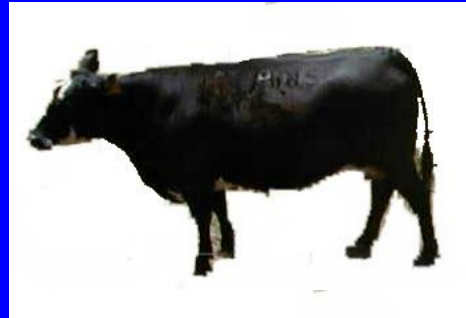
Slow Down Animals



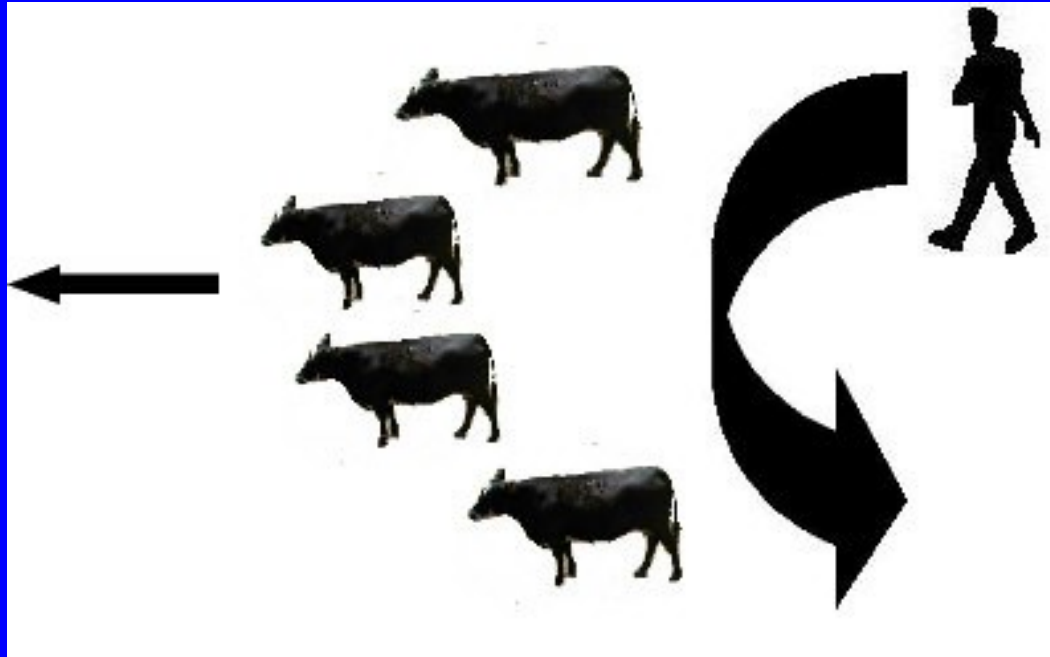
Speed Up Animals



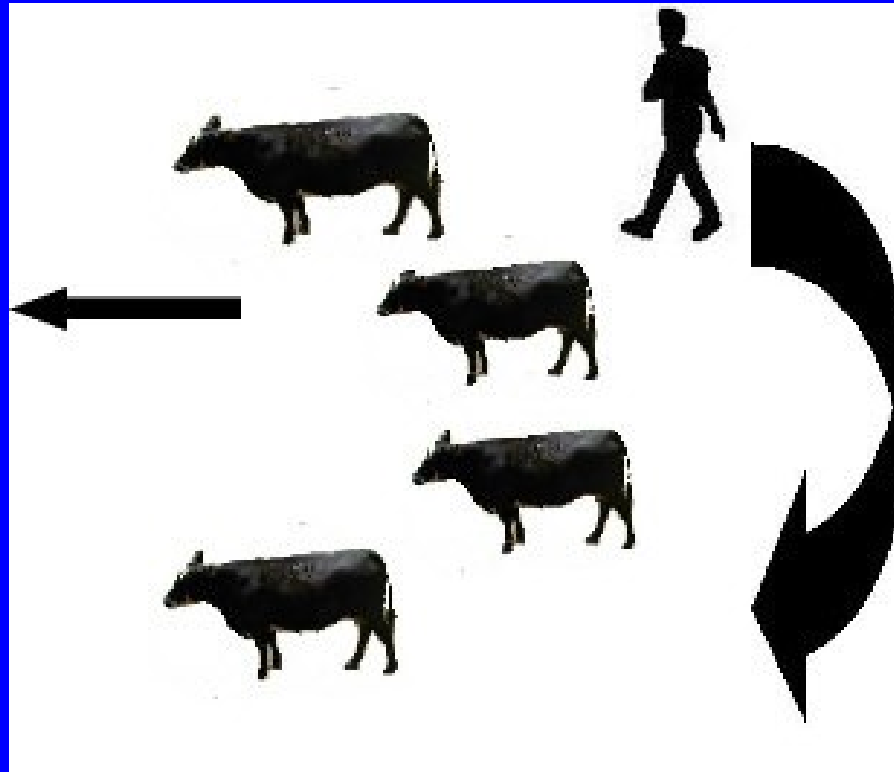
Walk Straight Lines



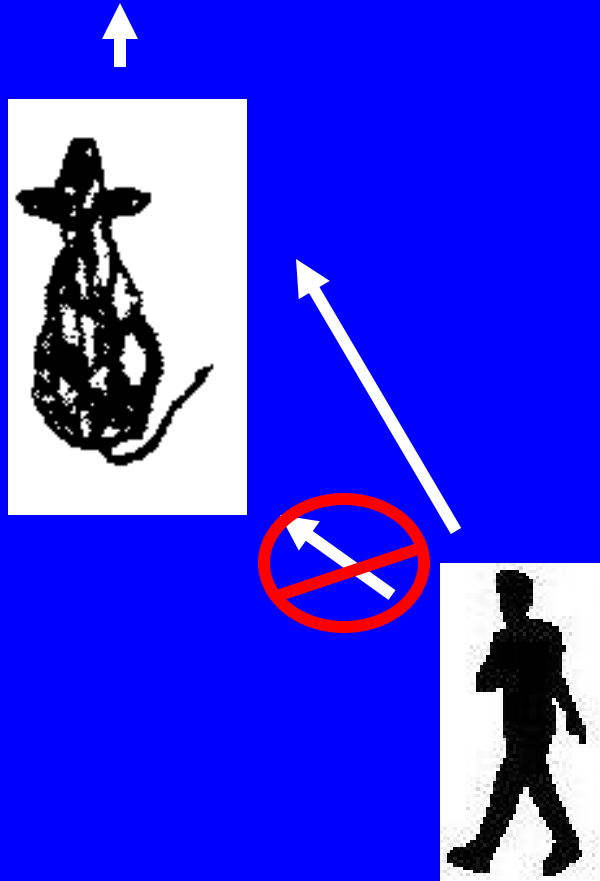
Curve In



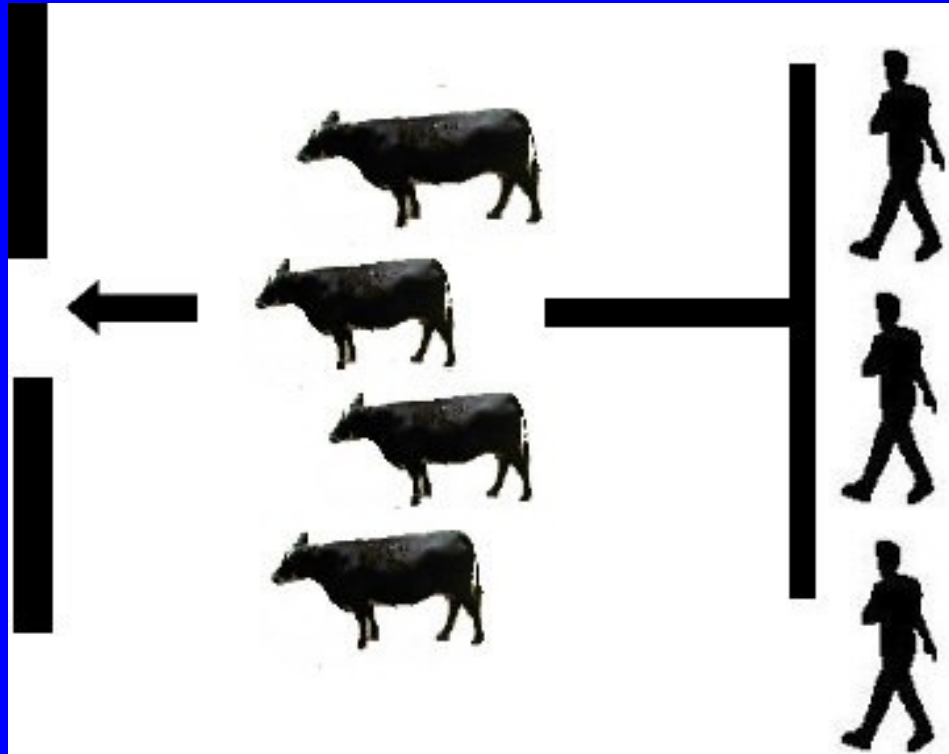
Curving Out



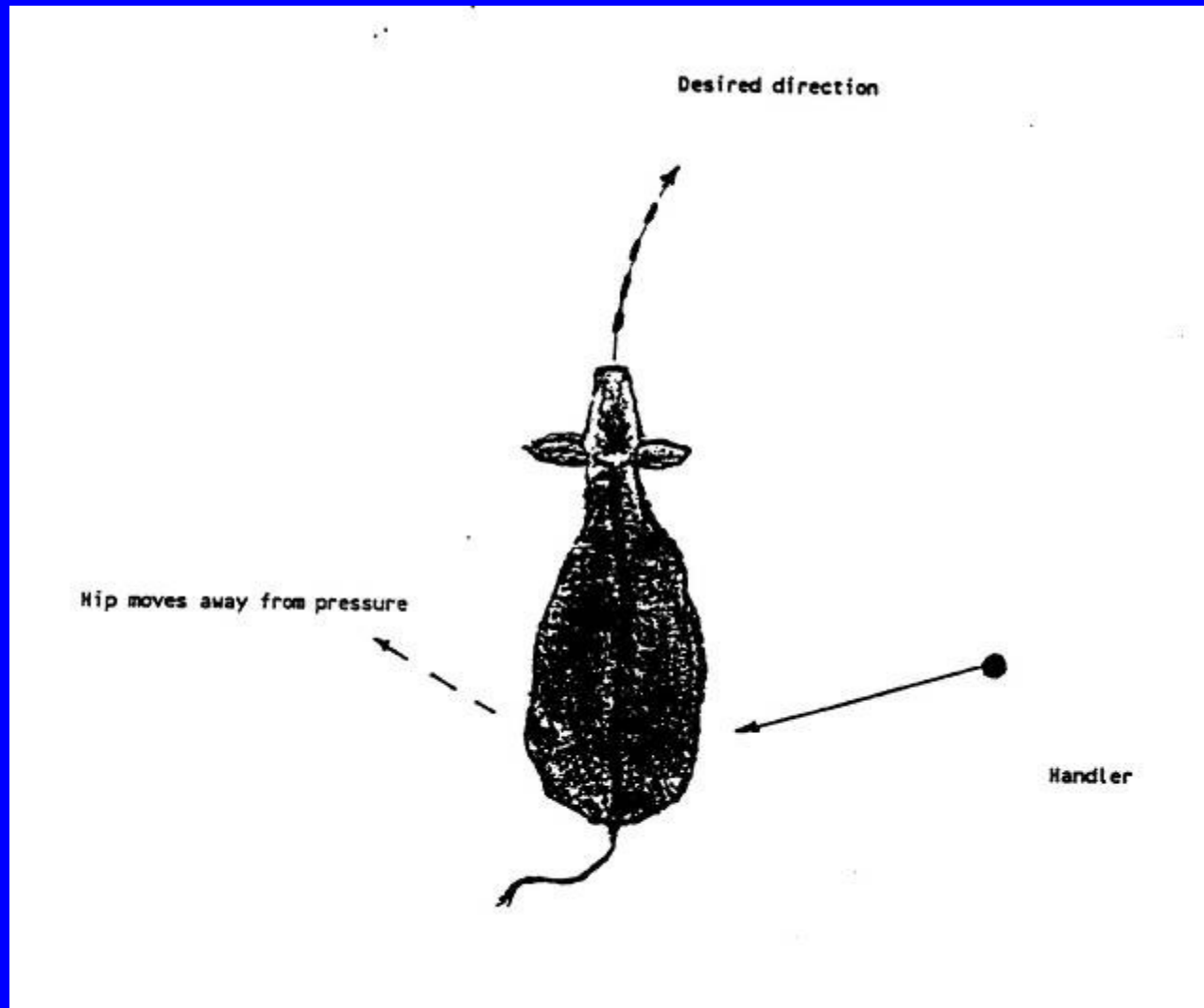
Aim to The Front



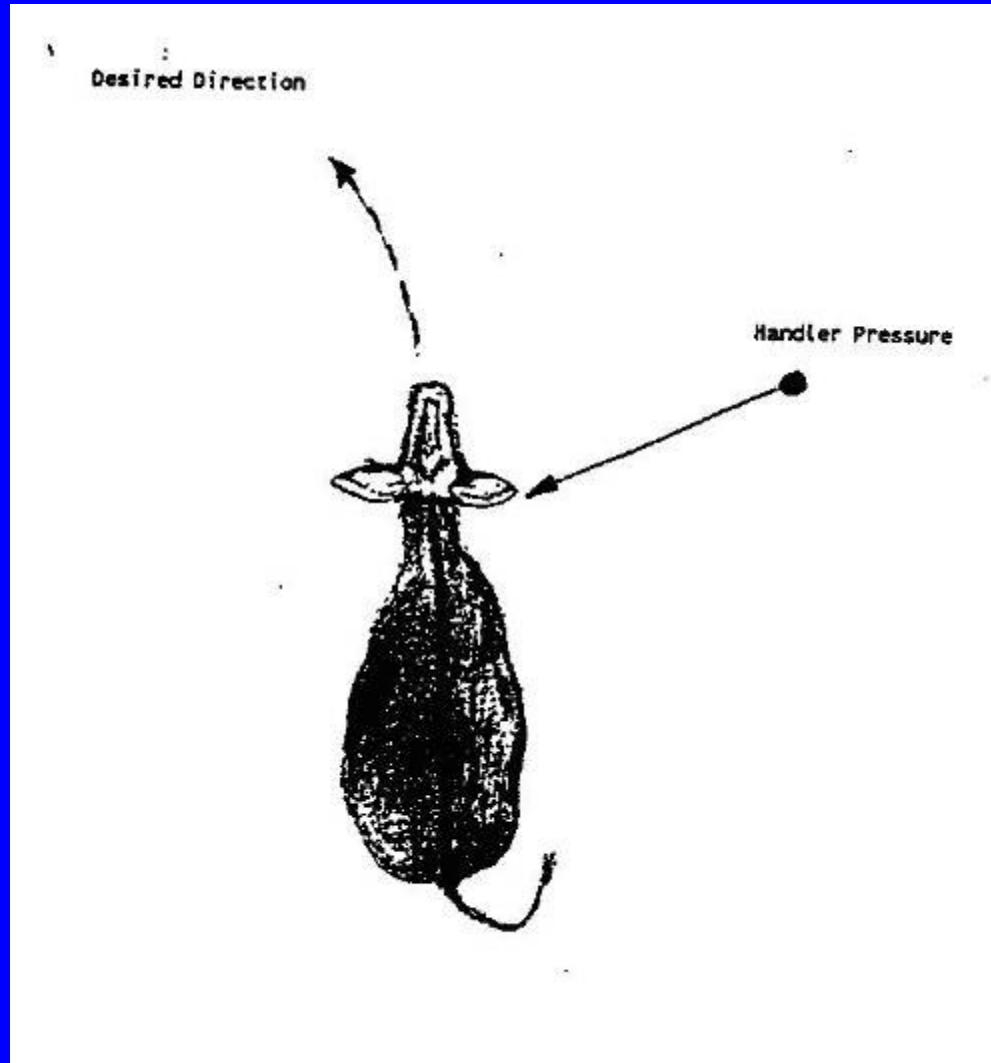
Work In a T



Turning Stock by Pressuring the Hip



Turn by Pressuring the Neck & Head



Cattle Behavior

Cattle who are use to being around other animals can become frightened and agitated when separated, becoming dangerous and difficult to handle. When appropriate keep animals together, they will be more calm and cooperative when in groups.

Cattle Behavior

Livestock with young exhibit a maternal instinct. Cows with young calves are sometimes more defensive and can be difficult to handle. The younger the calf the more the difficulty. If possible let calves stay close to the mother cow when handling.