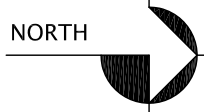


A B C D E F G H I J K L M N O P

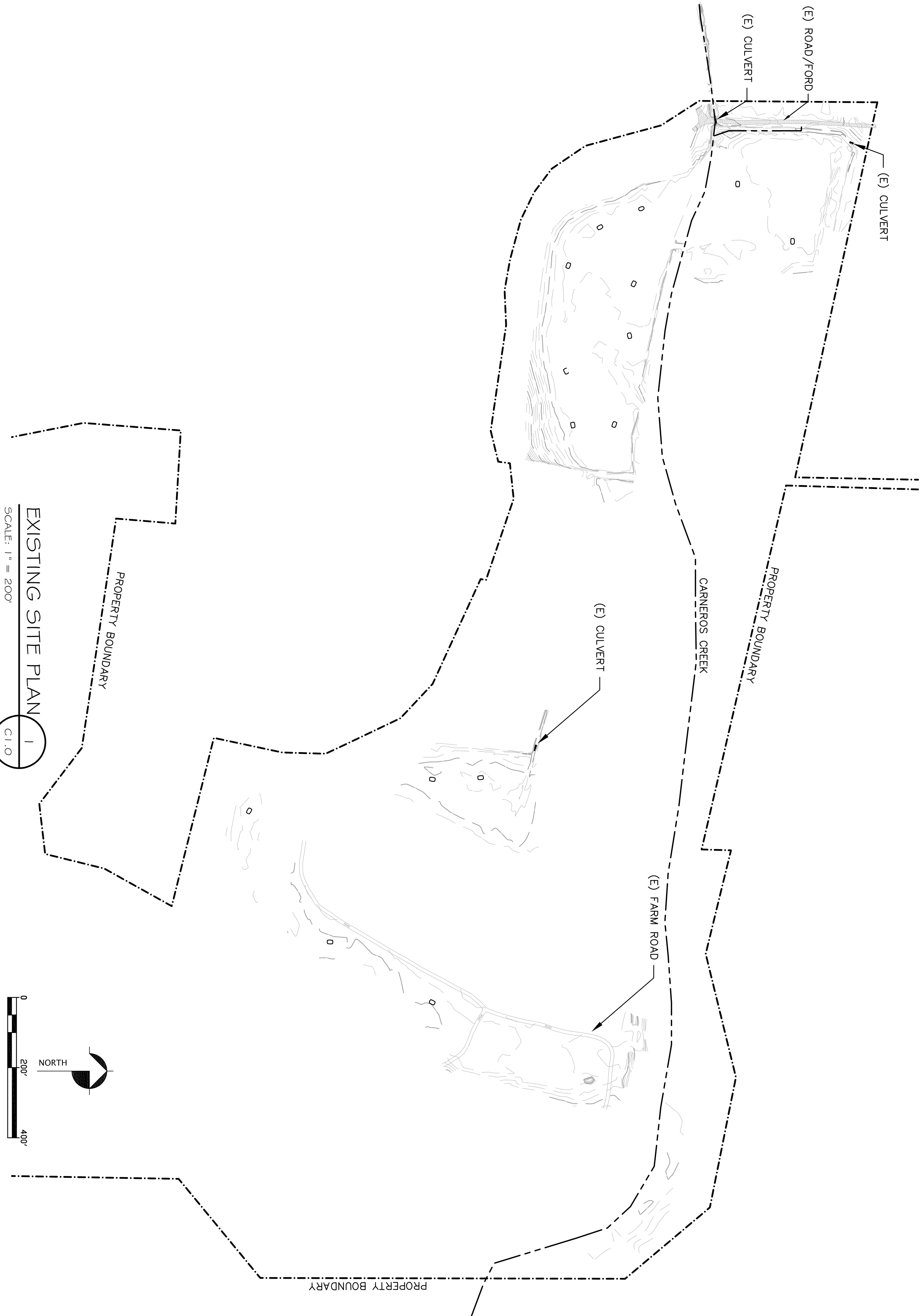
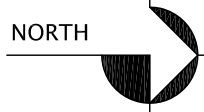
# ALBA - TRIPLE M RANCH WETLAND RESTORATION PROJECT



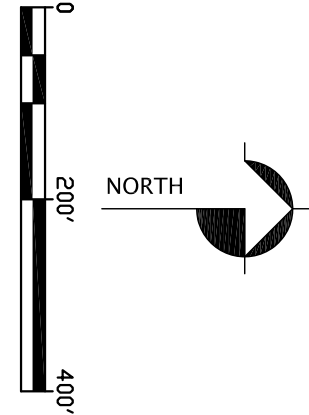
VICINITY  
NTS



SITE  
NTS



EXISTING SITE PLAN  
SCALE: 1" = 200'



## TECHNICAL REFERENCES

1. FALL CREEK ENGINEERING, INC. (CIVIL ENGINEER); DATED NOVEMBER 13, 2008, "ALBA WETLANDS RESTORATION PROJECT: CIVIL DESIGN CRITERIA."
2. LARGAY HYDROLOGIC SCIENCES, LLC (HYDROLOGIST); DATED AUGUST 1, 2008, "ALBA WETLANDS RESTORATION PROJECT: EXISTING CONDITIONS, MANAGEMENT RECOMMENDATIONS AND CONCEPTUAL DESIGN."
3. RASMUSSEN LAND SURVEYING, INC. (SURVEYOR).

## CIVIL SHEET INDEX

SHEET	TITLE
C1.0	COVER SHEET
C2.0	OVERALL SITE IMPROVEMENT PLAN
C3.0	GRADING PLAN – AREA 1 (40 SCALE)
C3.1	GRADING PLAN – AREA 2 (40 SCALE)
C3.2	GRADING PLAN – AREA 3 (40 SCALE)
C3.3	GRADING PLAN – AREA 4 (40 SCALE)
C3.4	GRADING PLAN – AREA 5 (40 SCALE)
C4.0	WETLAND GRADING PROFILES
C4.1	TREATMENT WETLAND PLAN, PROFILE AND SECTIONS
C4.2	ROAD GRADING PLAN, PROFILE AND SECTIONS
C4.3	FORD GRADING PLAN, PROFILE, SECTIONS, AND DETAILS
C4.4	STREAM CROSSING PLAN, PROFILE, SECTIONS, AND DETAILS
C4.5	WETLAND CROSSING PLAN, SECTIONS, AND DETAILS
C4.6	STREAM AND WETLAND CROSSING DETAILS
C5.0	EROSION CONTROL, AND REVEGETATION PLAN
C5.1	EROSION CONTROL, AND REVEGETATION PLAN AND NOTES

REV.	DATE	BY
Δ		

SHEET TITLE:

COVER SHEET

CLIENT:

ALBA  
TRIPLE M RANCH  
420 HALL ROAD  
LAS LOMAS, CA 95076

PROJECT TITLE:

ALBA – TRIPLE M RANCH  
WETLANDS RESTORATION PROJECT  
420 HALL ROAD  
LAS LOMAS, CALIFORNIA 95076

FALL CREEK ENGINEERING, INC.

Consulting Engineers

Cal • Environmental • Water Resources

P.O. BOX 7894, SANTA CRUZ, CA 95061  
TEL. (831) 438-3654 FAX (831) 438-4832



DRAWN BY: PEM

CHECKED BY: PHH

DATE: AUG 2009

JOB NO: 20820

SCALE: AS SHOWN

SHEET: C1.0

PRELIMINARY DRAWINGS NOT FOR CONSTRUCTION