

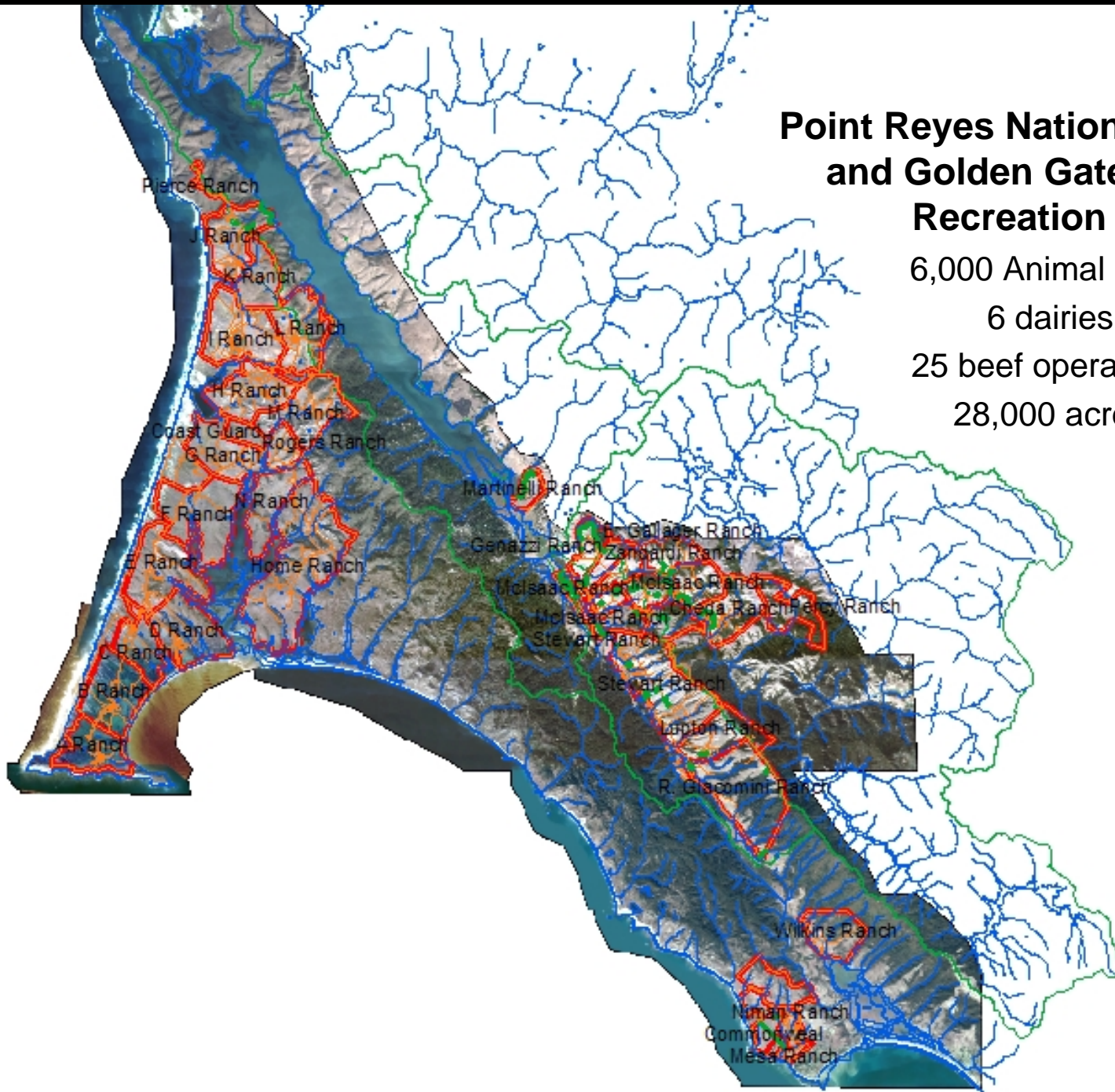
Point Reyes National Seashore and Golden Gate National Recreation Area

6,000 Animal Units

6 dairies

25 beef operations

28,000 acres



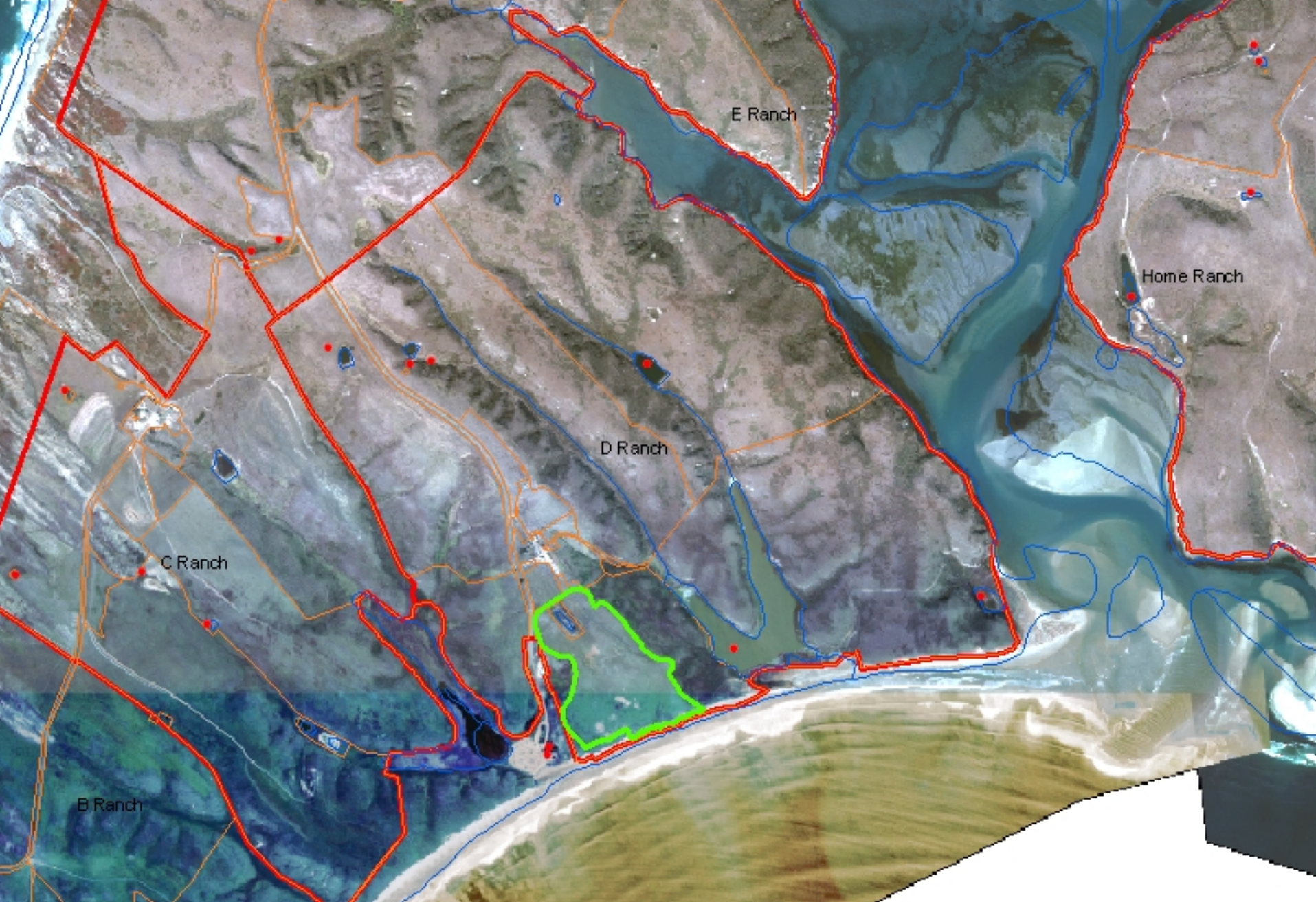












E Ranch

Home Ranch

D Ranch

C Ranch

B Ranch

Doreen L. Smith





Slide provided by Bob Budd



To be eaten or burned - grass has two fates, both of which it survives.”

James Galvin