

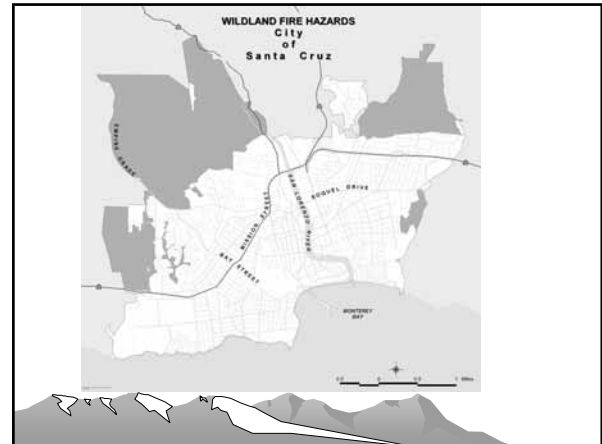
Control of Blue Gum Eucalyptus in Coastal California Workshop
 Coastal Training Program
 Elkhorn Slough National Estuarine Research Reserve

**WUI (Wildland-Urban Interface)
 Risk Reduction**

**Local Government
 Challenges in Creating
 Defensible Space**



Fire Chief Ron Prince
 Santa Cruz Fire Department



Case Study
 Wildland Fire Mitigation Project
 at DeLaveaga Park,
 City of Santa Cruz

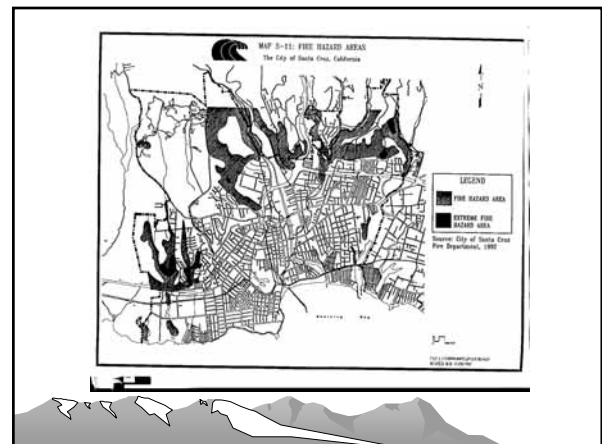
- In the early 1990's, City's updated General Plan identified those portions of the City which were considered high and extreme fire hazard areas.
- 1992—City Council adopted an "Urban Forest and Wildland Interface Policy Statement," which outlined specific goals and objectives related to enhanced safety.

DeLaveaga Park Case Study (continued)

- 1994—Using stated objectives of this Council policy, City staff developed an implementation strategy that involved a pilot project/demonstration area.
- A 25-acre site which was adjacent to the newly constructed public safety dispatch center was selected to demonstrate modern, environmentally sensitive wildland mitigation techniques.
- A process that included a fire risk assessment; an environmental initial study; biotic, butterfly habitat, and erosion control studies culminated in a comprehensive vegetation management plan.


DeLaveaga Park Case Study (continued)

- With the aid of a Federal hazard mitigation grant, the vegetation management work began in August of 1999 and was completed in November 1999.
- From start to finish, the 25-acre demonstration project took the following investment:
 - ◆ 6 years of studies, public hearings, and political debate.
 - ◆ Over \$400,000 in consulting and contractor fees.
 - ◆ The equivalent of 1 year of staff time (over 2,000 hours).




Control of Blue Gum Eucalyptus in Coastal California Workshop
 Coastal Training Program
 Elkhorn Slough National Estuarine Research Reserve


DeLaveaga Park Project



**Project area:
WUI at its Best!**



**Santa Cruz County
Communications
Center**



Project Schedule

City Council Approved
 VMP Specifications with revisions.....April 27, 1999


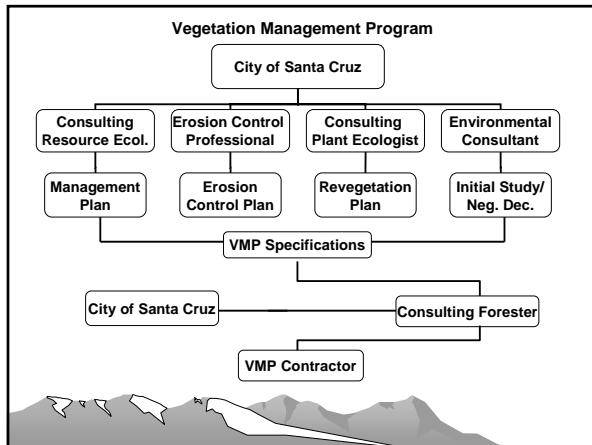
City Council directs
 Erosion Control and Revegetation
 Specs/Plans to be revised.....April 27, 1999

Consultants begin revisions to
 Erosion Control and Revegetation
 Specs/Plans.....May 10, 1999

VMP Specifications revised.....June 9, 1999

Notice inviting bids
 advertised for VMP Project.....June 14, 1999

Revisions to Erosion Control
 and Revegetation Specs/Plans completed.....July 9, 1999

Bid Opening VMP Project
 at City Clerk's office.....July 14, 1999


Staff Report deadline for
 City Council Meeting.....July 16, 1999

Approval of Erosion Control
 Specifications at City Council.....July 27, 1999

Approval of Revegetation
 Specifications at City Council.....July 27, 1999

Award of VMP Project
 Contract at City Council.....July 27, 1999

Erosion Control/Revegetation
 Contractors hired.....August 16, 1999



VMP Project begins
 (12-week project period).....Aug. 23, 1999


Demonstration area completed.....Sept. 7, 1999

Demonstration area inspection
 and determination issued by City.....Sept. 15, 1999

VMP Project Completed.....Nov. 15, 1999

Erosion Control and Revegetation
 for VMP Project completed.....Dec. 3, 1999


Burn Period (Window).....Sept. 27–Oct. 29, 2000



Project Costs (not including City Staff Time)

- Fire Protection Consultant \$ 10,000
- Environmental Consultant \$ 46,000
- Resource Ecologist \$ 13,400
- Erosion Control Specialist \$ 5,000
- Plant Ecologist \$ 4,500
- Wildlife Specialist \$ 2,000
- Consulting Forester \$ 25,000
- Vegetation Management Contractor \$225,000
- Erosion Control \$ 49,489
- Revegetation \$ 20,000
- Toxicologist \$ 2,500

\$402,889



Control of Blue Gum Eucalyptus in Coastal California Workshop
Coastal Training Program
Elkhorn Slough National Estuarine Research Reserve

